

Made
Possible by
You



THE TOWERS
AT TOWER LANE

Impact Report
2024



THE TOWERS

AT TOWER LANE

1	2	3	4	5	6	7	8	9	10	11	12	13	14	15	16	17	18	19	20	21	22	23	24	25	26	27	28	29	30	31	32	33	34	35	36	37	38	39	40	41	42	43	44	45	46	47	48	49	50	51	52	53	54	55	56	57	58	59	60	61	62	63	64	65	66	67	68	69	70	71	72	73	74	75	76	77	78	79	80	81	82	83	84	85	86	87	88	89	90	91	92	93	94	95	96	97	98	99	100
---	---	---	---	---	---	---	---	---	----	----	----	----	----	----	----	----	----	----	----	----	----	----	----	----	----	----	----	----	----	----	----	----	----	----	----	----	----	----	----	----	----	----	----	----	----	----	----	----	----	----	----	----	----	----	----	----	----	----	----	----	----	----	----	----	----	----	----	----	----	----	----	----	----	----	----	----	----	----	----	----	----	----	----	----	----	----	----	----	----	----	----	----	----	----	----	----	----	----	-----

Made Possible by *Our Mission*

Our Mission

We are a warm and vibrant senior community—infused with Jewish values—where people live their best lives.

Our Guiding Principles

- We are an inclusive community, fostering respect for all.
- We are committed to compassionately putting the person before the task and to connecting genuinely with one another.
- We explore and embrace the most innovative ways to help people continue growing, learning and celebrating life.
- We lead with quiet competence, serving one another with care, strength and humility.

Our Vision

We will be a center of excellence focused around seniors and based in Jewish values, always innovating ways for people to continue growing and connecting within and beyond our walls.



Resident Yvonne Schall with Stacey Berg, Hospitality and Training Manager

Our Jewish Values

Honor thy Father and thy Mother (Kabed Et Avicha V'Imecha)

Honor your father and mother, so you will lengthen your days and so that it will be good for you.

Inclusion

(Avadim Hayinu B'Mitzrayim)

We welcome all into our communities and embrace them.

Intention

(Kavana)

Bringing full attention to our thoughts, actions, and words helps us live deeply.

Commitment to Community

(Kehila)

As human beings, we fulfill ourselves most of all, in communities that manifest justice, holiness, and peace.

Human Dignity

(K'vod Hab'riyot)

We see the spark of the divine in each other.

From Generation to Generation

(L'Dor va Dor)

Valuing, respecting, and connecting to each generation. Young to old, old to young, past, present and future.

Improving the World

(Tikkun Olam)

Each good thing we do helps heal the world.

Joy!

(L'Chaim!)

To life!

Made Possible by *You*



Gustave (Gus) Keach-Longo
President/CEO



Linda Cedarbaum
Chair of the Board

Our accomplishments this year are a tribute to you, all of you. You are our families, partners, volunteers, donors, friends, board directors, committee and task force members and our remarkable team members. Each of you brought unique skills and perspectives that contributed significantly to our success. Your dedication to our vision, collaboration, and support for our shared future made all the difference, especially during challenging moments. It's truly inspiring to see how we can achieve so much when we work together.

This year, we have seen the realization of our dreams. Years of imagining, designing and planning have come to full-fruit—made possible by you.

Our Ground Floor Renovation was once a vision for our future. Now it is a collection of beautiful, life- and light-filled spaces that lift us up as we enjoy both sides of our beloved building. Our new spaces truly reflect what our community has always been since our inception, progressive, modern and undoubtably hamish. Our new fireplaces have become the hearths of our home as many of us sit with one another after dinner. Members of our Ground Floor Design Taskforce and Ground Floor Funding Taskforces made this transformation possible.

One primary goal of our Ground Floor Renovation Project was to increase our number of spaces available for our growing number of new evidence-based programs. Prior to our renovations, we had only two spaces in which programs could hold our gatherings. We found ourselves waiting to offer valuable programs to our residents simply due to lack of appropriate space. Once our project is complete, we will have many new resident-focused spaces to run our programs concurrently.


Some examples of how our community came together during this project to make all of this possible are reflected in some of our building's new spaces.

Our dining experiences have been transformed with the addition of our two new open kitchens; where all meals are prepared fresh in front of our residents. Our **Harry and Jeanette Weinberg Café** is the heart of our ground floor. Our new **Linda and Jesse Cedarbaum Elm Dining Room** offers a new dining space where we enjoy breaking bread together in a focused and peaceful setting. Next spring, our new outdoor dining patio will offer dining al fresco.

Our new **David and Sharon Bender Family Foundation Solarium** provides access to feeling the sun on our skin, while remaining safe from our ever-changing New England weather. This space is set up to greet our visitors by our new Tower One entrance. Residents can enjoy glider chairs, read by the fire, or join a group of neighbors working on a project together at the farm table in front of the windows.

Our completely redesigned **Siegal Family Salon** will soon offer hairstyling services along with manicures/pedicures. The salon also will offer barber services and massage therapy.

Our beautiful new **Vine Family Gift Shop**, in memory of our beloved Barry Vine, will open in January with a variety of gift giving items. This will be the perfect spot for us to pick up something special for our friends and families as we celebrate the moments in their lives. Our friends from our community outside of our doors will find that our new shop is the perfect place for them to find special and unique items.



Our new **Koral Family Conference Room** soon will become a special gathering place for when our residents and their families need a private space together to celebrate milestones. Our **Janie Holmes Library** will open soon in a new location with large windows facing our **Jacqueline Koral Gazebo** in our lush **Vlock and Kantor Courtyard**. Thanks to the **Silverman Family** this new space was fully updated and furnished with comfy chairs for quiet activities such as reading, completing puzzles and sharing stories with our neighbors.

Our **James M. Shure Family Sanctuary** offers an elevated synagogue for practicing our faith traditions. This space was carefully designed to offer our community a touch of the land of milk and honey. Using new Jerusalem stone, which was imported specifically for our community, our new sanctuary is the perfect spot to reflect. Our new Bima was handmade in Israel, at Kibbutz Lavi, and manually adjusts to wheelchair height for our residents who read the Torah from their assistive devices.

Our Community Garden has bloomed throughout this summer thanks to generous grants from the **Jewish Foundation of Greater New Haven**. Our Community Garden Taskforce organized by countless individuals who stepped forward offering their time, talent and treasure. Our new **Catherine Weiss Poetry Garden** offers a tranquil outdoor spot for workshops, learning and, of course, poetry. Our **Robert and Jodi Katz Vegetable Garden** has provided a harvest of vegetables to our Jewish Family Services' food pantry. Our new outdoor garden and recreation space has something for everyone. We think you would all agree that this has transformed the look and feel of our campus. This project is the ideal example of what it means to live in community.

Our **Dog Park** is currently under construction. Everyone knows how much we love our pups at The Towers. We look forward to having our pets enjoy some outdoor time near our community garden. This new open space for our dogs was so generously built by the Vine family in memory of Barry Vine. **Barry's Barking Lot** will be a wonderful addition to our campus.

As you read above, this has been a transformational year for The Towers and for our whole community. It took a community, a truly dedicated community, of individuals who each stepped forward to make this possible. It is because of YOU, our community, who made this year such an outstanding success.

Our transformation would not have been possible without the grit and hard work of our Board of Directors, committees and taskforces, donors, families, and our outstanding team members. You can find a full list of all our partners further in this report, featuring our Honor Roll. We want to offer a special "THANK YOU" to our cherished residents, who so graciously rolled with the rollercoaster experience of renovating an occupied 55-year-old building. Your ongoing encouragement and excitement for this project kept our team going.

With our Ground Floor Project nearing completion at the end of this calendar year, we will look forward to some new adventures together. We will continue expanding our good work, always improving the lives of our older adults.

Together we will go from strength to strength.

Making a Difference



412

Volunteers
Ages 5 – 106!



39

Programs led
by volunteers



10,148

Program
participations
by residents



63

Unique programs
offered to residents



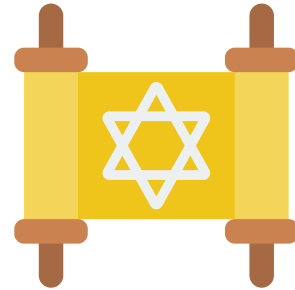
60,000+

Visitors welcomed to
The Towers



92

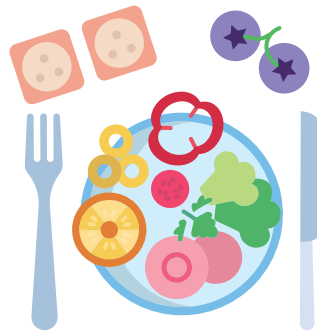
Residents received spiritual guidance through our Chaplaincy Program



306

Chaplaincy hours provided

86,962
Meals served



28,867
Meals subsidized*



701

Hours of grant-funded housecleaning

**Subsidized meals are funded through our co-generator project.*

Made Possible by *Our Team*

A Conversation with Tim Smith, Director of Quality Operations



Timothy Smith has spent most of his career in the hospitality and culinary world, studying at the University of New Haven and working for over twenty years in dining services and facilities for senior living organizations. It was during that time when Tim's path crossed The Towers' as a Regional Director of Operations, Morrison Living, where he

successfully oversaw dining and/or facilities for multiple properties, including The Towers for 4 years.

Tim's extensive experience in senior living combined with a close, personal relationship with his own grandmother helped build the foundation for his professional goals. More than anything, Tim sought to master resident satisfaction and a quality product, while prioritizing getting to know individuals on a personal level. It was, and still is, commonplace to see Tim taking a pause to sit and chat with his residents. His own objectives and integrity aligned with that of The Towers' and the vision to provide unrivaled services and amenities. With The Towers Team, Tim helped spearhead special Dining Programs as well as the construction of a brand-new state-of-the-art kitchen and dining room.

When the opportunity to share and expand on his own expertise presented itself in the Spring of 2024, Tim couldn't wait to jump on board and join the Towers' team. As the Director of Quality Operations, he is now managing and improving the day-to-day operations that help The Towers flourish and stand out as the one-of-a-kind organization we are.

Tim recently sat down with Jennifer Bayer for an interview to share his vision for our future.

JB: Tim, how do you envision the impact of your role on The Towers in the short and long-term?

TS: The question we will answer will always be, the "why" behind all our initiatives and actions to ensure that our mission and guiding principles are woven throughout everything we do. Community is also culture, and our work will be informed, first and foremost, by our values. As we solve problems for individuals, we will also solve wider issues as they impact the broader community.

Over the long-term we will continue to grow our community, while bringing greater cohesion to it and an even higher level of elevated hospitality. We will approach each resident and family as unique and special. Each relationship that we forge will include meeting people where they are and always beginning from a place of great respect.

This new role at The Towers, will enable me to get back to my roots in hospitality, where my focus was on creating meaningful moments and events while making clients feel special.

JB: What was it about The Towers that made it the right place for your next professional chapter?

TS: I chose to work with this team. Having had so much interaction with CEOs throughout my career, The Towers stood out for operating with purpose according to mission and principles, not just its bottom line. It is the culture and the approach to work, people, community and care that makes The Towers stand out in such a singular way.

Tim Smith, Director of Quality Operations, oversees The Towers facilities team, front desk team, microbusinesses, and liaises with residents and families.

Made Possible by Our Partners and Funders

HUD Green Resilient and Retrofit Program Grant will Improve The Towers for Generations to Come



Jennifer Bayer VP, Juana Matias HUD, Senator Richard Blumental, President/CEO Gustave (Gus) Keach-Longo

The Towers is thrilled to have been awarded a \$20 million grant under the U.S. Department of Housing and Urban Development (HUD)'s Green and Resilient Retrofit Program (GRRP). This grant, part of a larger initiative supported by the Biden/Harris Administration's Inflation Reduction Act, will enhance energy efficiency and climate resilience for properties housing low-income individuals, families, and seniors.

Congresswoman DeLauro expressed her support for the award stating, "This funding – one of 17 awards nationwide – will enable us to make comprehensive upgrades that will include modernizing heating and cooling systems, improving insulation, installing energy-efficient windows, and implementing renewable energy solutions to The Towers at Tower Lane, ensuring that residents live in a healthier and more sustainable environment. It underscores our commitment to providing quality, affordable housing while addressing critical environmental challenges."

HUD Regional Administrator Juana Matias was on-site to celebrate with The Towers this past July, and talked about HUD's commitment and vision for the future. She emphasized,

"the need for creative solutions, both building and most importantly preserving our housing stock. And that's what we're doing right now."

Gustave (Gus) Keach-Longo explained during his celebratory remarks, "I think about how each generation is responsible for preparing for the next," Keach-Longo said. "You know how we say that we plant a tree that we may never sit under? We are actually sitting under the trees that prior generations have planted for us, but we are also planting the seeds now for future generations."

Through this project, The Towers will also be provided consulting and energy auditing support to help prioritize and accomplish numerous enhancements.

Jennifer Bayer, Vice President, Strategic Initiatives expresses her gratitude, "Everything that The Towers accomplishes, is made possible by our partners, friends, supporters and donors, all those who share in our mission and vision for a better future for our seniors. Thanks to HUD, The Towers will provide the highest quality of care to our older adults, while also being the best possible steward of our environment and community."



Resident Victor Fasano, with City of New Haven Mayor, Justin Elicker

Made Possible by *Our Jewish Federation*

Impact Grant: Culinary Judaics Academy with Chef Danny Corsun in Partnership with Women's Philanthropy and PJ Library

Thanks to Jewish Federation's Impact Grant Program, The Towers has been able to run meaningful Jewish programs. The Towers, Women's Philanthropy of the Jewish Federation of Greater New Haven, and PJ Library partnered to share resources to infuse our community with fun and engaging hands-on Jewish education by bringing generations together for more meaningful connections, relationships through cooking in The Towers new dining room and kitchen.



Organizational Awards



2024

Move In Toolbox for The Towers

AJAS Jewish
Programming Award

Sarah Moskowitz, Ruthie Greenblatt, Karen Purvis

Chaplaincy
LeadingAge CT Spirit of
Accountability Award

Ryan Linsley

The Towers Garden
LeadingAge CT Spirit of
Accountability Award

2023

Stacey Berg

LeadingAge CT Aging
Service Award of
Excellence

Ricardo Saldana

2023 CALA Outstanding
Resident Service Award

Cindy Leffell, Board Chair

2023 LeadingAge CT
Trustee of the Year Award

2022

The Towers

AJAS Jewish
Programming Award

John Carter

CALA Outstanding
Resident Service Award

Jeremy Perkins

LeadingAge CT Aging
Service Award of
Excellence

Elyse Levine

LeadingAge CT Volunteer
of the Year

The Towers

LeadingAge CT Spirit of
Mission Award

2021

Programming/Volunteer Development at The Towers

CALA Best Practices Award
for Managed Residential
Services

The Towers

Nonprofit Stars Align
Award for Sunspot
Innovation

2019

Riva Sparks

LeadingAge CT Volunteer
of the Year

Terri Rivers

LeadingAge CT Aging
Service Award of Excellence

Kevin Baker

CALA Outstanding
Resident Service Award

Housekeeping

Department at The Towers

CALA Best Practices Award
for Managed Residential
Services

2018

Gustave (Gus)

Keach-Longo

Long Term Care
Ombudsman Program

The Towers

CALA Media Award

The Towers

Positive Portrayal of Aging
in CT Media Award

Lifetime Achievement Award: *Lisa Stanger, J.D., LL.M.*



Lisa Stanger is the Executive Director of the Jewish Foundation of Greater New Haven and is extremely honored to receive the Lifetime Achievement award by the Towers Foundation. Lisa was born and raised in the tiny and little-known hamlet of Brooklyn, New York. Lisa spent her academic years in New York receiving degrees from all of the

major schools in NYC, her bachelors at Barnard College, a Masters of Social Work at Hunter College, a JD from Fordham University School of Law, and an LL.M in Taxation from NYU School of Law. Lisa then practiced as a Trusts and Estates lawyer for several years, first in New York and then in New Haven.

Each day, Lisa helps members of our community think about and decide how to assist the organizations that are important to them. Lisa has extensive experience

working with donors and professional advisors concerning charitable planning as well as giving opportunities. Lisa acts as a philanthropic advisor, gift planner, and endowment executive. Her expertise also includes not-for-profit law and the rules and regulations related to endowments. During Lisa's tenure, the Jewish Foundation has grown in size (\$18M to \$80M) and in impact (\$600,000 in annual distributions to over \$4M). Through the Create a Jewish Legacy program, the Jewish Foundation has collaborated with local organizations, including The Towers as well as area synagogues, to help secure over \$11M in legacy commitments. Other recent initiatives spearheaded by Lisa and her team include the COVID-Maimonides Fund, the Jewish Seniors Task Force, scholarship programs for camps, college, Israel programs and synagogue schools, community security grants, as well as the PACE/LOJE funds for the Jewish Federation which now fund over 20% of our community's annual campaign.

Lisa is on the Board and is Vice-Chair of the International Festival of Arts & Ideas, and serves on the Board of Solar Youth and the CT ADL as well as President of the Barnard Club of Connecticut. Lisa lives in Westville with her husband Greg, her daughter Sophia and her 2 rescue dogs.



Lisa Stanger presenting The Towers Foundation with Elderly Grant funding.

President's Awards & Volunteer Recognitions

President's Awards

- Michael Shanbrom, Regional Director, Secure Community Network
Security Enhancements
- Quinnipiac University Occupational Therapy Doctoral Students and Professor Nicole Fidanza, OTD, OTR/L
Proactive Partner Model
- Yale School of the Environment Students and Professor Robert Klee
Environmental and Sustainability Projects
- Housing Connecticut clinic, organized by the Yale Urban Design Workshop; Faculty: Andrei Harwell (coordinator), Alan Plattus, Anika Singh Lemar, Kate Cooney; Students: Grace Brooks, Ce'Ondra Ellison, Amber Han, Ramil Ibrahim, Peter Martinka, Yi Ming Wu
Campus Redevelopment Exploration

Volunteer Recognitions

- Benjamin Greenberg, Young Leadership in Volunteerism Award
- Nancy Fliss, Excellence in Program Development Award
- Hyla Chasnoff, Volunteer of the Year
- Barbara Goldhamer, Volunteer of the Year



Volunteer Benjamin Greenberg



Volunteer Barbara Goldhamer with resident Catherine Moore*



QU students Maily Tran, Rob Katz, and Nicole Pandolfi

Towers Foundation Honor Roll

We Thank All Our Generous Donors • July 1, 2023 - June 30, 2024



Resident Sally Prosky with PJ Library Participant

\$3,000,000 and Above
US Department of Housing
and Urban Development
State of Connecticut

\$500,000 and Above
CHEFA HTCC Program

Philanthropic Partners
\$125,000 and Above
Harry and Jeanette
Weinberg Foundation

Area Agency on Aging of
South Central CT

Pillars
\$36,000 - \$124,999
Jewish Federation of
Greater New Haven

Jewish Foundation of
Greater New Haven

Housing Ministries of
New England

Barry* and Hyla Vine
Brandeis University

**Generation to Generation
(L'Dor va Dor)**
\$10,000 - \$35,999

The David & Sharon
Bender Family
Foundation Inc.

Linda and Jesse
Cedarbaum

Community Foundation
for Greater New Haven

Kate Brown and
Larry Greenberg

TD Charitable Foundation

**Improving the World
(Tikkun Olam)**
\$1,800 - \$9,999

Jennifer and Robert Bayer
Rachel and Mark Dibner

Debra and Richard Epstein

Greater New Haven
Green Fund

Rhoda Goldberg

Robert and Jodi Katz

Gustave (Gus) and Joseph
Keach-Longo

KeyBank

Cindy and David Leffell

Lauren Randell

Linda Randell

Elizabeth and Alan Reznik

Monica Smyth
Schlessinger and
Michael Schlessinger

James M. Shure

Alan Siegal

Cathy and Seth Weiss

Doris and Edward Zelinsky

**Dignity
(K'vod Hab'riyot)**
\$360 - \$1,799

Abie Abrams

All American Waste, LLC

Harvey Bixon

Ernest Bodenweber*

Lori Brochin

Michael Diamond

Norman Feitelson

Geraldine Ganezer

John and Frances Gordon

David and Janet Hafler

Coleen Hellerman

Sharon Huttner

Roger Ibbotson

Ellen and Daniel lead

Stephanie and Michael
Jacobson

Michael Kahn

Susan and Donald
Kaletsky

Barbara and Ivan Katz

David and Tiffany Katz

Benjamin Klein

Jacqueline Koral

Anthony Lane

Pat McClintick

Dorothy Giannini-Meyers
and Steven Meyers

Lloyd Nurick

Eileen O'Donnell

Rebecca and Nicolas
Olshansky

Sydney Perry

Ruth Ratner

Alan and Elizabeth Reznik

Joanne and Stephen
Rudof

Shirley Scholder

Lois and David Sherwin

Ina Silverman and Jay
Sokolow



Resident Norman Feitelson, who proudly turned 100 in October 2024

Lisa Stanger and Gregory Colodner	Robin Appel
Caryl and Rabbi Steven Steinberg	Linda and Roger Astmann
Betsy and Lawrence Stern	Judith and Stephen August
The Towers Resident's Association	Diane Bader
Stacey and David Trachten	Barak Zelinsky Foundation, Inc.
Tzedakah House	Harriet Barstein
Roberta Vine	Nancy Fliss and Yechiel Bart
Larry Wallnau	Rachel Bashevkin
Richard Wurtzel	Frances Belasco
Jamie and Ira Zubkoff	Carlton Benson
To Life (L'Chaim) Up to \$359	Terry Berger
Kenneth Abrams	Susan and Bruce Bergman
Caron and Norman Alderman	Katherine and Christopher Berman
Norman Aldrich	Frances and Martin Bernstein
Nancy Alexander and Phillip Bernstein	Philip Bleich
Kathie Alhadeff	Betty Lou and Joseph Blumberg

Linda and Gerald Blume	Justin Cohen
Carl Blumenthal	Linda and Leonard Cohen
Betsy and Edward Bodling	Scott Cohen
Julia Bogardus	Sue Cohen
Elaine and Jonathan Bowman	Bonnie Cole
Debbie Brander	Robert Cole
Cynthia and Stephen Brenner	Peter Connolly
Rita Brieger	Susan Conover
Kelly Briggette	Jane Cooney
Elissa Brown	Judy Cooper
Lydia Brown	Leo Cristofar and Bernadette DiGiulian
Ernestine McCauley-Browning and Jesse Browning	Barbara Cushen
Michele and James Brownstein	Lorri and Andrew Danzig
Lauren Brownstein	Mindy Daskal
Mindy and Stanley Brownstein	Fred Davis
Harriet Friedman and Charles Bruce	Mark DeFrancesco
Rosina Burns	Joan Delmonico*
Janet and Steven Cadranal	Eleanor Denley
William Canosa	Alan Diamond
Rena Cheskis Gold	Marilyn Dickman
David Chorney	Jody Dietch
Muriel and Morton Chorney	Hedda Rubenstein and Michael Dimenstein
Judy and Barry Cobden	Renee Drell
Bruce Cohen	Gary Drucker
Sharon and Henry Cohen	Ellen DuBoff
	Joseph Gall and Diane Dwyer
	Elizabeth and John Edelglass
	Marilyn Engelman

Towers Foundation *Honor Roll* (Continued)

Michael Enson
Sue and Paul Etkind
Carol and Joel Evans
Amy Falco
Olga Marcus and Rabbi
Michael Farbman
Victor Fasano
Harriet and John Fast
Pam and Michael Feinberg
Constance Fleschner
Susan and Steven* Floman
Geraldine Frankel
Sandra Friedman
Dolores Galiette
Ian Ganassi
Ronni and Stephen
Garbowit

Susan Boulware-Gelfand
and Robert Gelfand
Marcia and John Gell
Cindy and Jaime Gerber
Kim Gifford
Mildred Godfrey
Carl Goldbaum
Gladys Goldbaum*
Emily Goldsmith
Holly and Emanuel
Gomez Jr.
Eileen Gomory
Elyse Greenbaum
Karen and Steven
Greenberg
Dorothy Greenwald
Shirley Griesing
Ina Gross

Susan and Charles Guthrie
Judith Hahn
Gail Halprin
Joyce Handleman
Lawrence Handler
Otha C. Hargrove
Sandra Harris
Marjorie Hart
John Hawes
John Heyder
Susan and William
Hoffman
Julie Hokin
Hoopes Morganthaler
Rausch &
Scaramozza LLC
David Horowitz
Willa and Marc Horowitz
Lawrence Hyatt
Dianna and Jason Hyland
Brook Jackson
Catherine Jackson
Irene and Bruce Jacobs
Isidor Juda*
Stanley Juda
Denise and Alan Judelson
Ruth Jurgensen
Vivian and Richard
Kantrow
Mark and Sandy Kaplan
Carol and Daniel Katz
Geraldine and Gerald Katz

Shira Kazandzhi
Diane and Sherman Kerbel
Sheila and Michael
Kerzner
Francie and Stephen
Ketainck
Elizabeth and Stuart
Ketainck
Annette Kisner
Alan Klatzkin
Anne and Robert Klee
Edward Konowitz and
Andrea Rosenfield
Beth and Jay Korman
Bette Kozak*
Sue and Daniel Krutt
Lynn Kudish and
Fred Kudish
Marsha Landsberg
Acquetta Lewis
Sandi Lidsky
Jennith and Sheldon Liner
Barbara Lipetz
Joan Lipman
Shelley and Stephen
Lipman
Sye Lipscomb
Adele and Martin London
Howard Lurie*
Paulina Magnetti
Robert Mainzer
Judith Manasevit



*Suzanne Piacentini, HUD, Juana Matias Regional Director HUD,
and Kalumma Santos Martinez, HUD*

Shelley Margolis	Michele Polan
Ellen and Leonard Martin	Helen Polewoj
Patricia Mascia	Cynthia Popoli
Lynne Maser	Elaine Portnov
Helene Meltzer	Sally Prosky
Rissa Mendlestein	Tracy Rabin
Barbara and Harold Miller	Rebecca Radin
Rita and Douglas Miller	Ilene and Steven Radin
John Montano	Delci Lev and Gary Rappaport
Daniel Moore	Amy and Steven Rashba
Gail Moore	Johanna Rayman
Sarah and Andrew Moskowitz	Orriel Razee
Sandra Naclerio	Sherri and Abraham Reich
Sukanya Narasimhan	Jennifer Reif
Hinda Niemeyer	Bonnie and Alan Rice
Agnes Nwokoye	Sylvia Rifkin
Michelle and Daniel O'Brien	Yolanda Robinson
George O'Connell	Angela Rodriguez
Linda and Jerid O'Connell	Elizabeth Roffman
Jenny O'Connor	Diane Rosen
Nancy and Marc Olins	Stanley Rosenbaum
Zane Olmer	Helen Sackler-Rosenberg and Harry Rosenberg
Rivka and Jerome Paley	Judith Rosof
Brenda Paoletta	Gary Ross
Laura Glazer Pels	Ellen Rubenfeld
Stacey and Hap Perkins	Amy Rudnick
Sandra Peterson	Hana and Gary Rudnick
Joan Pite	Robin Sadek
Pledgeling Foundation	Ellen and Daniel Salmon



Resident Linda Shiffrin with Bunny

Ann Salomon	Kim and Glenn Shiffrin
Berta and Henry Samson	Linda Shiffrin
Tiffany Collier and Jason Sartori	Patricia Shure
Jill Savitt	Anita Silver
Janet and William Sayles	Nancy and Brett Silvers
Elizabeth Scheibel	Nanci and Craig Sklar
Heni Schwartz	Riva Smolen
Pam Goodman and Michael Schwartz	Social Action Committee - Temple Beth Sholom
Lauren and Paul Seplowitz	Linda Waldman and Rabbi Hesch Sommer
Mariah and Bruce Seymour	Arlene Beck and Ari Soobitsky
Elinor Shanbrom	David Sotnick
John Shanley	Sharon Starr
Carol and Lawrence Shapiro	Sandra Stein

Towers Foundation *Honor Roll* (Continued)



Thank you
for your
support!



Residents Hazel Taft and Lois Jason

Emily Fine and
Stephen Stein

Louis Stein

Ruth Ann Steinberg

Mary Alice McNutt and
Frank Strassburger

Judith and Harry Strauss

Joyce Sutherland

Francee and Richard
Sviridoff

Cheryl and Alan Talpalar

Charlotte Teitelman*

Pamela and David
Teitelman

Janet Tettelbach

Lillian and Nathan Topf

Elizabeth Torres

Linda Towbin

Eleanor Ugolik

United Way of Greater
New Haven, Inc

Heidi Vernick

Joanna Vincent

Carole "Corky" Weinstein

Martha and Bertrand
Weisbart

Lori and Laurence Weiss

Anita Nager and Wally
Wentworth

Elizabeth and Jesse
Wescott

Marion and Larry Winkler

Janet Woodward

Patricia Zacarelli

Rhoda Zahler Samuel

Barbara and Steven
Zalesch

Albert Zax

Karen and Ira Zeid

Joanne and Richard Zitser

Rose Zolnik

Barbara Zuk

**Of blessed memory*

Every effort is made to correctly recognize all of our generous donors. If there are any inaccuracies or omissions, please contact Jennifer Bayer, Vice President, Strategic Initiatives at (203) 772-1816 x290 or jennifer@towerlane.org.

Made Possible by *Our Volunteers*

**With gratitude and appreciation, we thank the volunteers who propel
The Towers forward and who enable us to go from strength to strength.**

Almanzo Abraham	Alicia Brak	Anita Cotton	Henry Fernandez	Jeanie Gyurkovics
Emma Adams	Debbie Brander	Hyla Chasnoff	Natasha Feshbach	Pat Haley
Lames Abdelrahman	Lilah Bromberg	Anthony Coelho	Jaden Fidalgo	Sharina Hamm
Dobi Abramowitz	Tania Bromberg	Alima Conde	Emily Fine	Michael Hankin
Jeffry Adelman	Jeremy Bronen	Isaiah Cooper	Nancy Fliss	Miriam Haston
Michelle Adelman	Ilene Rosalinsky	Carolyn Coore	Samuel Florio	Bluma Hecht
Esther Adelstein	Bronen	Meghan Currey	Tyler Ford	Rabbi Mendy Hecht
Nasreen Ahmed	Shirley Boulware	Barbara Cushen	Melissa Friedman	Chaya Hecht
Iyla Bhandary- Alexander	Joe Blumberg	Sarah Cussler	Bonnye Frost	Rosie Hecht
Valeria Alfano	Riki Brackman	Rose Danko	Leslie Flowers	Melanie Hernandez
Delores Alleyne	Rivka Brachman	Jeremy David	Ruth B. Frohman	Laura Heyder
Julie Annunziata	Jim Brochin	Norma Davidson	Amy Gagne	Josh Hochman
Therese Anovlave	Lori Brochin	Ruth Davis	Charmaine Gagnon	Carol Hollander
Nia Antoine	Cade Brown	Alissa Davis	Audry Galarza	LaShayla Howard
Diandra Karikari- Appiah	Amalya Brownstein	Naomi Deitsch	Dee Galiette	Sarah Hull
Angela Arango	Debra Brun	Joe Delgado	Leslie Galindo	Jaylen Hunter
Emma Arline	Cheryl Cappiali	Bernadette	Ian Ganassi	Regina Hyman
Vedant Aryan	Anfernee Carmona	DiGiulian	Jezzamie Garcia	Emily Hyun
Jae-Hee Bae	Jonni Carter	Amy Diagne	Carol Garlick	Heidi Hurwitz
William Barbee	Joey Correa	Nechelle Dias	Erin Gerardo	Chris Hwa
Mira Baum	Casteran	Ava DiPalma	Emmanuel Gibson	Gemma Iaccarino
Aaron Baum	Linda Cedarbaum	Jonathan Doolittle	Robert Gittleman	Deniz Ince
Daya Baum	Atziyadet Cervantes	Nancy Downing	Gladys Goldbaum*	Bea Jackson
Noah Bayer	Ripley Chance	Renee Drell	Claudia Golden	Stephanie Jacobson
Samuel Bayer	Divya Chandra	Chaya Drizin	Barbara Goldhamer	Sharia Jean
David Bazan	Lauren Chapey	Yehudis Drizin	Geraldine Gomez	Chloe Jensen
Christie-Lynn	Rabbi Yafa Chase	Marjorie Drucker	Nadia Goodman	Lucille Jensen
Beaton	Jecelyn Chau	Gary Drucker	Gabriel Goodman	Samia Jimenez
Marla Beck	Cecelia Chen	Tziporah Drukier	Brianna Gray	Darius Jing
Lynne Beetz	Bracha Cheruff	Ellen DuBoff	Danielle Grant	Jane Johansen
Rabbi Marci Bellows	Leo Cho	Liliana Dumas	Doris Gray	Dottie Johnston
Nohra Bemal	Aminata Cisse	Leah Rivka Edelkopf	Candice Green	Doris Jones
Terry Berger	Sam Clare	Emerson Ellis	Aviva Green	Rohan Kalaria
Adele Bidon	Isabel Clare	Judah Ellison	Janyce Greenberg	Jacob Kalodner
Barbara Blossveren	Anthony Coelho	Alexa Elias	Benjamin Greenberg	Esty Kantor
Marc Blossveren	Amelia Cohen	Nandini Erodula	Rashi Greenfield	Sharon Kantrow
Keith Bologh	Robert Cole	Allan Esteron	Dorothy D.	Mushka Kaplan
Alexander Minor	Jesus Colon	Laura Falcone	Greenwald	Eta P. Kaplan
Botello	Diana Colwell	Victor Fasano	Liora Grunblatt	Jane Kasper
	Janeth Corey	Donna Fedus	Rohan Guttumlakala	Art Katz
	Angel Correa	Norman Feitelson	Nagellis Guzman	Carol Katz

Made Possible by Our Volunteers (Continued)

Chana Katz
Gerri Katz
Rob Katz
Sara Katz
Pam Kaus
Shaina Keller
DeJah Kelson
Marina Khan
Susie Kim
Isabel Kirsch
Annette Kisner
Dheeman Klair
Justin Kotei
Golda Korenblit
Bette Kozak*
Ariana Krebel
Diane Krevolin
Nechama Krimmer
Fanta Kromah
Beth Kupcho
Fraida Landa
Susan Laursen
Ellen lead
Jane Lederer
Nora Lee
Cindy Leffell
Father Ryan Lerner
Elyse Levine
Linda Levine
Acquetta Lewis
Lance Ligon
Barbara Lipetz
Joan Lipman
Rachel Lipsker
Betty Litto
James Liu
Nicolas Liu
Lucas Llovera
Cali Londardelli
Sylvia Longhorn
Joe Keach-Longo
Helen Lopez
Trish Loving
Diana Lucero

Charles Ludwig*
Arianna Luna
Joel Lynch
Carol Ma
Patricia McClintick
Morgan McCormick
Susan McDonald
Ella McGhee
Arnold Mages
Robert Mainzer
Tessa Malone
Emily Malpira
Judy Manasevit
Marc Mann
Kristy Manning
Traci Marando
Maya Markowitz
Racheli Martinez
KKevin Mejia
John Mekayla
Giovanni Melendez
Sadie Meltzer
Sheila Mendelstein
Sadie Merkle
Andrew Merritt
Stashek Michnik
Randy Miller
Jane Miller
Jarelys Miranda
Alyssa Misiewicz
Jessica Mitchell
Nicholas Mocatelli
Leah Mock
Samantha Mokotoff
Catherine Moore*
Thailynn Taylor-
Morehead
Diana Moreno
Bettye Morrison
Hannah Morrison
Zayla Morrison
Andrew Moskowitz
Eli Moskowitz
Isaac Moskowitz

Fiirdaous
Moutamotsi
Matthew Mowerson
Riley Moxon
Richard Munoz
Rose Murphy
Joshua Mutonji
Sandra Naclerio
Kawtar Nadama
Sarah Nalchi
Betsy Nardini
Emily Nash
Naama Neeman
Nasir Neuby
Dale Newman
Leba Okovenu
Marc Olins
Avery Olshansky
Jonathan Once
Chibuiki Oparaocha
Jakob Park
Lena Parrillo
Sammy Parry
Mehreen Pasha
Mili Patel
Irene Paucar

Yarden Pawlak
Hendel Peret
Bryan Perez
Victor Perez
Jaydelis Perez
Jeremy Perkins
Mark Petronzi
Jesse Piazza
Gunnar Pikul
Sarah Pillard
Joan Pite
Dana Pletter
Ranjit Pookkottil
Sue Prach
Doris Kahn Preston
Manoka Pringle
Sally Prosky
Hibah Qaisar
Megan Quimby
Stephen Rabin
Amy Raccagni
Hayden Raccagni
Marguerite Ramirez
Linda Randell
Eli Rarick
Malky Raskin

Batya Raskin
Cookie Razee
Sibs Resch
Caroline Reiner
Vicki Revere
Antony Reyes
Jo Reymond
Eric Reymond
Verna Ricker
Beylay Ridky
Sylvia Rifkin
Terri Rivers
Ke'Asia Robinson
Iman Rodican
Kiesser Rodriguez
Marcos Rodriguez
Britny Rivas Rojas
Saul Roselaar
David Rosenbaum
Jess Rosenthal
Rochel Rosenstein
Mushka Rosenstein
Rabbi Jason
Rubenstein
Maggie Russell
Isaac Saldana



Volunteer Cathy Weiss dancing with Resident Sylvia Rifkin



Liz Torres, HousingSmarts, and her mom, Ana Torres

Bella Sandman
Rivka Sandman
Migdalia Santiago
Luis Santos
Noah Sapire
David Sasso
Jared Saucedo
Yvonne Schall
Linda Schultz
Andrew Schlessinger
Sam Schwartz
Veena Scholand
Rabbi Benjamin
Scolnic
Lynda Segal
Fred Sendroff
Christopher Sevigny
Jody
Sharninghausen
Rishi Shah
Lee Sheppard
Linda Shiffrin
Bailey Shiz
Darshan Shrestha
Ina Silverman

Josie Sirowich
Gayle Slossberg
Rebecca Slossberg
Maryam Shabazz
Rabbi Rona Shapiro
Marji Shapiro
Harold Shapiro
Isabel Sharma
Daniella Shear
Amy Shteyman
Barbara Singelton
Chava Sitrin
Leonard Smith
Jayden Smith
Mercy Smith
Deborah Smith
Riva Smolin
Phyllis Sochrin
Rabbi Heshe F.
Sommer
Riva Sparks
Maya Sparks
Lisa Stanger
Hannah Steffke
Simi Stephens

Leiba Stone
Mushka Stone
Rachel Suchoff
Shayna Suchoff
Dalia Suchoff
Maddy Sussman
Colin Sutherland
Hazel Taft
Jonathan Telemann
Gabriel Telemann
Tammy Testut
James Thomas
Yadira Torres
Pedro Torres
Elijah Townley
Howard Taylor
Janet Tettelbach
Renee Tracey
Maily Tran
Eleanor Ugolik
Sasha Vaughn
Adrianna Vazquez
Maia Velazquez
Barry J. Vine*
Joseph Vinetz



Rover the Therapy Dog

Emma Vittorio
Justin Votey
Rabbi Alvin
Wainhaus
Jose Walters
Sierra Walters
Chloe Wang
Kendall Washington
Corky Weinstein
Zahava Weisman
Cathy Weiss
Gabriella Weiss
Rochel Wilhelm
Herschel Wolff
Serena Wong
Koko Womg
Marie Woods
Rabbi Eric
Woodward
Richard Wurtzel
Liam Yin
Tenzin Youdon
Matthew Youkilis
Lucy Yu
Zachary Zabib

Rose Zanders
Emerson Zecena
Doris Zelinsky
Lissa Zellman
Arthur Zhang
Angela Zhao
Jamie Zubkoff
Phil Zuccaro

**Of blessed memory*

In Memoriam: *Barry J. Vine*

Reflections by Jennifer Bayer



Hyla and Barry Vine, of blessed memory



Barry Vine, of blessed memory

I would like to take this opportunity to reflect on our dear friend, our mentor, our partner, our collaborator, our inspiration, a mensch and Tzadik, Barry Vine, of blessed memory.

My first correspondence with Barry was titled, “Wherever I Go, There You Are”. Barry’s name loomed and still looms large in Greater New Haven. While I didn’t know Barry personally before my time at The Towers, my kids grew up playing in the JCC’s Vine Family Auditorium. They also enjoyed summers at the JCC day camp, where Barry ensured that kids who lacked the financial resources would have access to scholarships. His impact could be felt at the Woodbridge Teen and Senior Centers, at the Jewish Family Service Food Pantry and all over the community. Barry was a man whose reputation preceded him, a man whose legacy – I understood the depth and breadth of. You could say I was a bit intimidated to introduce myself.

What I came to quickly understand is that for all of Barry’s meaningful work and impact, he was truly humble. His philanthropy and generosity were born out of the sheer joy of making those around him happy. This was his

calling. I also came to learn, over the years, that this joy was also equally shared by Barry’s beautiful wife, Hyla, equally kind, equally caring, equally loving and focused on community. An unparalleled team.

Barry wanted to be involved in every new project. He would call to ask, “what are you working on? What’s happening?” No matter what my response was (and there was always a response – because of the plentiful number of projects going on here at The Towers) he wanted to not only to give of his wealth, but also his time and wisdom. When the pandemic hit us, Barry, immediately and without hesitation, rolled up his sleeves to make phone calls while helping to organize the campaign that would raise nearly \$200,000 for meals. We had 330 souls to feed and we accomplished that thanks to him.

Making meals affordable and available to all in need became a longer-term focus and again, Barry stepped up to help us fund and raise funds for our co-generator project, which is now subsidizing meals in perpetuity through annual energy savings. Barry would help us in the short-term and help us solve problems in long-term ways as well.



Barry Vine and Isidor Juda, of blessed memory Gustave (Gus) Keach-Longo, Seth and Cathy Weiss, and Barry Vine, of blessed memory

Barry and Hyla's presence can be seen and felt all over the Greater New Haven Community and everywhere within The Towers. From the Vine Family Gift Shop to our new hearing loop and Barry's Barking Lot Dog Run – Barry and Hyla's impact is on all we do. Uplifting residents by sponsoring shows and gifts has brought so much happiness to each individual in our community.

In a speech that Barry gave at The Towers in 2019, he said:

"People ask why I love The Towers so much, and I reply because it is an extension of my childhood. There's an adage that you can't go home again, but when I'm at The Towers, I feel that I am back home. I am back to the neighborhood that I grew up in, I am back to my childhood memories and experiences, and back to my hopes and aspirations for the future."

It meant so much to us that Barry never forgot his roots. No matter how successful, Barry always made time to tend to the community. This was our blessing.

In that speech, Barry went on to quote a favorite poem:

"Blessed is the person who lives with a good name and who departs this world with a good name. Wealth and health may pass away, but a good name lives on forever."

Barry, your good name will live on forever and we promise to continue your legacy of caring for those around us, for bringing more love and joy to our neighbors and friends. We promise to cherish and to keep your legacy everlasting.

Legacy Donors

Leave a Legacy Donors

These special individuals ensure we will go from strength to strength in the years ahead by choosing to honor The Towers in their estate planning. Thank you for planting trees for our next generation to enjoy.

Stacey Battat
Sharon & David Bender
Linda & Dr. Jesse
Cedarbaum
Bernadette DiGiulian
Louise & Irwin Epstein
Salvatore Garamella*
Sheila & Mark Garilli

Dorothy Giannini-Meyers &
Steven Meyers
John Gordon
Barbara Green Orell
Dorothy Greenwald
Pat Johnson*
Isidor Juda*
Vivian & Richard Kantrow

Robert Katz
Jacqueline Koral
Donna & Sidney Levine
Joseph Mascia*
David E. Schancupp
Carol & James Shanbrom
Dr. Alan Siegal
Bruce Spiewak

Lillian & Nathan Topf
Hyla & Barry* Vine
Lori & Dr. Laurence Weiss
Charlene & Steven Wendell
Nathan Zeidenberg*
**Of blessed memory*

Golden Door Donors

These outstanding members of our community planted the trees we enjoy today through their gifts. You are the strength upon which we now stand. Thank you.

Door to Independence
KBE Building Corporation

Door to Creativity
Sharon & David Bender

Door to Wisdom
Anonymous
Anonymous
Lisa Anderson &
David Gewirtz
Susannah & David Bailin
Joanne Bender
Lorri & Andy Danzig

Sidney & Arthur Eder
Foundation, Inc.
Louise & Irwin Epstein
Sheila & Mark Garilli
Dorothy Giannini-Meyers &
Steven Meyers
Elaine Grossman
J&M Plumbing, LLC
Ruth Jacobson
Jodi & Robert Katz
Jacqueline Koral
Ilene & Richard Kramer

Dr. David & Cindy Leffell
Rosalyn Lerner
Donna & Sidney Levine
Dr. John Levy
Barbara & John Lichman
Honorable Joan Glazer
Margolis & Stuart Margolis
Lloyd Nurick
Esther & Floyd Ozeck
David E. Schancupp
Lisa & Fred Serra
Carol & James Shanbrom

James M. Shure
Dr. Alan Siegal
Elaine & Marc Silverman
Hilda & Robert Silverman
Judith & Mark Sklarz
Bruce Spiewak
Shula & Raymon Sterman
Nancy & Joseph Sulzberg
Hyla & Barry* Vine
Lori & Dr. Laurence Weiss

Resident Legacy Donors

Residents who have generously donated their security deposits to ensure outstanding programming continues.

Abduladhem Al-Ani
Ernest Bodenweber*
Shirley Boulware
Beatrice Breiner
Rose Danko
John Farina*
Victor Fasano

Ian Ganassi
Gladys Goldbaum*
Ann Haddad
Easter Howard
Isidor Juda*
Alan Klatzkin
Joan Lipman

Robert Mainzer
Joseph G. Mascia*
Pat McClintick
John Montano
Catherine Onley
Joan Pite
Migdalia Santiago

Shengming Yang
Albert Zax
**Of blessed memory*

To learn more about this program, please contact Jennifer Bayer, Associate Vice President, Strategic Initiatives, at (203) 772-1816 x290 or jennifer@towerlane.org.

Endowments

The Towers Foundation Thanks all the Donors who Established and Contributed to our Endowments so we Always go From Strength to Strength.

Adele Edelmuth Memorial Fund

Barbara H. Katz Fund for Assistance to Resident Support Services at Tower One/Tower East

Barry and Hyla Vine Family Endowment for The Towers*

Beatrice Breiner Fund for the Benefit of The Towers

Cedarbaum Family Fund for Transportation for Towers Residents

David A. Beckerman Family Fund for The Towers Foundation

Donna & Sidney Levine Fund to Provide Food Assistance for Those in Need

Dorothy Giannini-Meyers Fund for the Benefit of The Towers

The Dorothy Giannini-Meyers Tower One/ Tower East Philanthropic Fund

Dr. Milton and Gladys Godfried Fund for Tower One/Tower East Health Center

Dr. Milton and Gladys Godfried Endowment Fund for the Benefit of Tower One/Tower East

Eva Kahn Endowment Fund for Assistance to Resident Support Services at the Tower One/Tower East

Freda Leffell Fund for Jewish Life at The Towers*

Genevieve "Ginny" Nishball Endowment Fund for Horticulture

Gladys Godfried Memorial Garden Fund, Endowed by her husband Dr. Milton Godfried

Gordon Family Fund for the Benefit of The Towers

Jack Evans Endowment for the benefit of Tower One/Tower East

James M. Shure Fund for The Towers in Memory of Beverly Levy

Koral Family Fund for the Benefit of The Towers

Louise and Irwin Epstein Endowment Fund for The Towers

Nathan Sokoloff Fund, endowed by Heidi & Tracy Saxe, for the benefit of The Towers

Robert Katz Family Fund for The Benefit of the Towers*

Ruth Shiffrin Blum Family Fund

Tower One/Tower East Community One Event Fund

Tower One/Tower East Endowment Fund*

Towers 50th Anniversary Endowment Fund

Towers Endowment in Honor of Evelyne Siegal

Towers Endowment in Honor of Fran Wallnau*

Towers Residents' Association Fund in Honor of Hyla and Barry Vine

Towers Fund in Honor of Vivian and "My Richard" Kantrow

Zelda Kroogman Fund for the Benefit of Tower One/Tower East

Endowments are managed by the Jewish Foundation of Greater New Haven. For more information, please contact Lisa Stanger at lstanger@jewishnewhaven.org.

**Designates funds that received gifts in the 2024 fiscal year*



Emeritus Director, Jacqueline Koral

Create a Jewish Legacy



Our community lives each day informed by The Towers' Jewish principles of inclusion, intention, commitment to community, human dignity, passing down values from generation to generation, improving the world, and joy. Through meticulously designed, evidence-based programs, we empower both our elderly residents and the broader community to lead measurably better lives. Sharing our expertise and programs, regardless of a recipient's ability to pay, reflects our unwavering dedication to social justice that lies at the heart of our mission.

Our legacy donors embody the spirit of caring community members who recognize the importance of ensuring the finest care for our elderly population today and for generations yet to come. They understand the interconnectedness of senior care with the well-being of families and the entire community. By leaving a legacy, your cherished values can transcend your lifetime, creating an enduring impact and creating connections with like-minded individuals. You become a vital thread woven into something larger—a legacy of support, unity, and community welfare.

A legacy gift is a deliberate act today that secures a brighter tomorrow. By leaving a bequest, you pave the way for The Towers to continue thriving and flourishing for years to come.

Establishing a legacy ensures:

- The continuation of life changing programs for future generations (e.g. Meal Sustainability, Evidence-Based Programs, Jewish Life, Volunteerism, etc.)
- The ongoing ability of The Towers to lead with innovation and progress
- The preservation and enhancement of a pivotal community asset that benefits all
- The opportunity for Jewish elders to uphold their beliefs and traditions

There are many ways to leave a legacy, including:

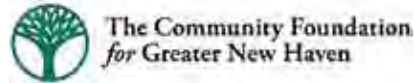
- A gift made through a Will or Trust
- A gift of Life Insurance as a named beneficiary
- A 401K or IRA Retirement Plan Designation beliefs and traditions

Corporate Partners



Our Partners

Leaders in their fields collaborate with us



Yale

Made Possible by *Friends of The Towers*

Nancy Alexander

Elon Boms

Stephanie Boms

Annette Charles

Naren Dhamodharan

Laurie Harkness

Michael Harris

Joel Karp

Robert Klee

Melissa Lang

Rabbi Benjamin Scolnic

Fay Sheppard

Richard Wurtzel

Doris A. Zelinsky



Board Chair, Linda Cedarbaum with Friend of The Towers Fay Sheppard



Friend of The Towers Nancy Alexander with Gayle Slossberg, CEO of the Jewish Federation of Greater New Haven



Board Member, Jeremy Bronen with President/CEO Gustave (Gus) Keach-Longo and Friend of The Towers, Naren Dhamodharan



Friend of The Towers Richard Wurtzel

Made Possible by Our Leadership

Board of Directors of The Towers at Tower Lane

Executive Committee

Linda Cedarbaum
Board Chair

Jamie Zubkoff
Vice Chair

Cindy Leffell
Immediate Past Chair

Lori Brochin
Treasurer

Linda Randell
Secretary

Robert Cole

Directors at Large

Donna Fedus

Robert Gittleman

Ellen lead

Dr. Stephanie Jacobson

Erik Johnson

Robert Katz

Marc Olins

Sammy Parry

Ina Silverman

**The Executive Committee
serves as the Board of
Directors for The Towers
Foundation*

Administration

Gustave (Gus) Keach-Longo
*President/Chief Executive
Officer*

Emeritus Directors

Diane Alderman*

Robert Bachman**

Sharon Bender*

Joseph Blumberg*

Charlotte Brenner

Andrew Eder*

Eileen Eder*

Alan Judelson*

Linda Kantor*

Barbara Katz*

Jacqueline Koral*

Peter Newman*

Lloyd Nurick*

Ted Schaffer*

Tracy Selmon*

David Schancupp*

Dr. Alan Siegal*

Rabbi Steven Steinberg

Nathan Topf*

Jay I. Vlock**

Richard Weiss*

**Former Board Chair*

***Of blessed memory*

Governance Committee

Linda Randell
Chair

Jennifer Bayer

Linda Cedarbaum

Robert Cole

Cindy Leffell

Staff Lead:

Gustave (Gus) Keach-Longo

Ground Floor Renovations Funding Task Force

Linda Cedarbaum
Chair

Annette Charles

Robert Cole

John Heyder

Gustave (Gus) Keach-Longo

Jacqueline Koral

Cindy Leffell

Gayle Slossberg

Specialists

Michael Bloom
Consultant

Liz Torres
Consultant

Staff Lead:

Jennifer Bayer

Resident Services

Stephanie Jacobson
Chair

Jeremy Bronen

Linda Cedarbaum

Robert Cole

Renee Drell

Nicole Fidanza

Donna Fedus

Crystal Manning

Sammy Parry



Vice President, Jesse Wescott with Resident Richard Kerbel



President/CEO Gustave (Gus) Keach-Longo with Board Director Sammy Parry

Ina Silverman

Staff Lead:
Cesar Silverio

Finance Committee

Lori Brochin
Chair

Linda Cedarbaum

Bob Gittleman

Cindy Leffell

Marc Olins

Linda Randell

Staff Lead:
John Heyder

Ground Floor Design Advisory Task Force

Cindy Leffell
Chair

Linda Cedarbaum

Irwin Epstein

Ellen lead

Larry Kalbfeld

Cesar Silverio

Bruce Spiewak

Jesse Wescott

Specialists:

Rosalyn Cama
Cama Inc.

Dov Feinmesser
Newman Architects

Peter Newman
Newman Architects

Carli Tine
Cama Inc.

Liz Torres
Consultant

Staff Leads:
Gustave (Gus) Keach-Longo
Jennifer Bayer

Dignified Dining Task Force

Robert Cole
Chair

Jennifer Bayer

Todd Dawid

Nicole Fidanza

Stephanie Jacobson

Cindy Leffell

Cesar Silverio

Timothy Smith

Jesse Wescott

Specialists:

Pat Atwood
Dementia Expert/Trainer

Debbie Brander Barbieri
Consultant

Roz Cama
CEO Cama, Inc.

Carli Tine
Project Manager, Cama

Staff Lead:
Gustave (Gus) Keach-Longo

The Towers Foundation Development Committee

Ellen lead
Chair

Debbie Brander Barbieri

Linda Cedarbaum

Renee Drell

Eileen Gomory

Robert Katz

Jacqueline Koral

Jay Korman

Cindy Leffell

Staff Lead:
Jennifer Bayer

Friends of The Towers

Nancy Alexander

Elon Boms

Stephanie Boms

Annette Charles

Naren Dhamodharan

Joel Karp

Robert Klee

Melissa Lang

Rabbi Benjamin Scolnic

Fay Sheppard

Richard Wurtzel

Doris Zelinsky

Staff Lead:
Gustave (Gus) Keach-Longo

Loving Kindness in Action: *Tributes*



Abie Abrams in memory of
Shirlee Abrams

Kenneth Abrams in
memory of Harry Frasier

Kenneth Abrams in
memory of Dean Peckham

Kenneth Abrams in
memory of Jaydev
Patel's mother

Norman Aldrich in memory
of John O'Connell

Kathie Alhadeff in memory
of Lillian Katzman

Diane Bader in honor of
Judy Manasevit's birthday

Harriet Barstein in memory
of Charlotte Teitelman

Rachel Bashevkin in
memory of Isidor Juda

Jennifer & Robert Bayer in
memory of Isidor Juda

Jennifer & Robert Bayer
Alvin Magid

Bruce & Susan Bergman in
memory of Isidor Juda

Harvey Bixon in memory of
Lillian Katzman

Harvey Bixon in memory of
Lucille Alderman

Betty Lou & Joseph
Blumberg in honor of Joe
and Cecle Adler

Gerald & Linda Blume in
memory of Helen Blume

Carl Blumenthal in
memory of Rhoda
Blumenthal

Betsy & Edward Bodling in
memory of Isidor Juda

Betsy & Edward Bodling
in memory of Edythe
Tanenbaum

Elaine & Jonathan
Bowman in memory of
John O'Connell

Kelly Briggette in memory
of John O'Connell

Lori Brochin in memory of
Esther Brochin

Lori Brochin in memory of
Isidor Juda

Elissa Brown in memory of
John O'Connell

Lydia Brown in memory of
Ruth Brown

James & Michele
Brownstein in memory of
Lillian Katzman

Lauren Brownstein
in honor of Seymour
Nepiarsky's birthday

Harriet Friedman &
Charles Bruce in memory
of Albert Friedman

Janet & Steven Cadranel
in memory of Lillian
Katzman

William Canosa in memory
of Ethel Bulansky Canosa

Rena Cheskis Gold in
memory of Herbert
Newman

Judy & Barry Cobden
in memory of Alex and
Julie Elkin

Judy & Barry Cobden in
memory of Esther Weiner

Bruce Cohen in memory of
Lillian Katzman

Justin Cohen in memory of
Minni Cohen

Scott Cohen in memory of
Sidney Cohen

Bonnie Cole in honor of
Norman Feitelson

Jason Sartori & Tiffany Collier in honor of Earle Mansfield's birthday

Lisa Stanger & Gregory Colodner in memory of Elaine Bayer

Jane Cooney in memory of Isidor Juda

Jane Cooney in honor of Norman Feitelson

Marilyn Dickman in memory of Kaila Margolis

Jody Dietch in memory of Charlotte Teitelman

Leo Cristofar & Bernadette DiGiulian in memory of Irene Potocki

Marjorie & Gary Drucker in memory of Isidor Juda

Marjorie & Gary Drucker in memory of Helen Drucker

Joseph Gall & Diane Dwyer in memory of Howard Gall

Marilyn Engelman in memory of Isidor Juda

Debra & Richard Epstein in memory of Lillian Katzman

Paul & Sue Etkind in memory of Herb Etkind

Harriet & John Fast in memory of Isidor Juda

Norman Feitelson in memory of Herbert Newman

Norman Feitelson in memory of Charles Ludwig

Constance Fleschner in memory of Joan Friedman

Constance Fleschner in memory of Sylvia & Irving Friedman

Dolores Galiette in memory of Isidor Juda

Geraldine Ganezer in memory of Isidor Juda

John & Marcia Gell in memory of Lillian Katzman

Kim Gifford in memory of Jack Calechman

Carl Goldbaum in memory of Gladys Goldbaum

Emily Goldsmith in memory of Gladys Goldbaum

Holly & Emanuel Gomez Jr. in honor of Emanuel Gomez Sr.'s birthday

Eileen Gomory in honor of Sylvia Alpert

Elyse Greenbaum in memory of Lillian Katzman

Kate Brown & Larry Greenberg in honor of Jill and Steve Brown

Dorothy Greenwald in memory of Estelle Spiewak

Dorothy Greenwald in memory of Gladys Goldbaum

Dorothy Greenwald in memory of Kaila Margolis

Ina Gross in honor of Barry Vine*

Ina Gross in memory of Leah Wallach

Marjorie Hart in honor of Cathy Weiss' birthday

John Hawes in memory of Ellie Kelman

Susan & William Hoffman in memory of Lillian Katzman

Willa & Marc Horowitz in memory of Dr. Reena Seltzer

Sharon Huttner in memory of Jack Abraham Huttner

Dianna & Jason Hyland in honor of Richard Stasiak for Valentine's Day

Irene & Bruce Jacobs in honor of Irene Prosky's birthday

Stanley Juda in memory of Isidor Juda

Ruth Jurgensen in honor of Pat Dillon's birthday

Susan & Donald Kaletsky in memory of Fran and David Wallnau

Vivian & Richard Kantrow in memory of Isidor Juda

Geraldine & Gerald Katz in memory of Karen Rae Shore

Geraldine & Gerald Katz in memory of Pearl Karmasin

Jonathan & Michele Keach in memory of Jane Keach

Gustave (Gus) & Joseph Keach-Longo in honor of The Towers Team

Annette Kisner in memory of Ruth Brown

Robert & Anne Klee in memory of Elaine Bayer

Benjamin Klein in honor of Steven Greenberg

Jay & Beth Korman in memory of Isidor Juda

Bette Kozak* in memory of Isidor Juda

Bette Kozak* in memory of Nedra Nobleman

Bette Kozak* in honor of Joyce Saltman's special birthday

Sue & Daniel Krutt in memory of Harriet Sidransky

Cindy & David Leffell in memory of Isidor Juda

Sandi Lidsky in memory of Lillian Katzman

Adele & Martin London in honor of Norman Feitelson's 99th

Howard Lurie* in memory of Ruth Shiffrin

Shelley & David Margolis in memory of Harriet Saginor

Ellen & Leonard Martin in memory of Adrienne Kasdon

Loving Kindness in Action: *Tributes* (Continued)

Patricia Mascia in memory of Joe Mascia

Rissa Mendlestein in memory of Charles Ludwig

Rita & Douglas Miller in memory of Isidor Juda

John Montano in memory of Melinda Cuomo

John Montano in honor of Jennifer Bayer

John Montano in honor of Nicole Merritt

John Montano in honor of Sarah Moskowitz

John Montano in memory of Harry Frasier

John Montano in memory of Jamie Davidson

Daniel Moore in memory of John O'Connell

Gail Moore in memory of Lillian Katzman

Sandra Naclerio in memory of Gustavo Martinez's mother, Lia

Sandra Naclerio in memory of Michael Kery's father

Sandra Naclerio in honor of Amy Golding

Hinda Niemeyer in memory of Isidor Juda

George O'Connell in memory of John O'Connell

Jenny O'Connor in honor of Joe Keach-Longo

Rebecca & Nicolas Olshansky in memory of Gladys Goldbaum

Rebecca & Nicolas Olshansky in memory of Julie Klein

Rebecca & Nicolas Olshansky in memory of Sally Kramer

Rebecca & Nicolas Olshansky in memory of Lucille Alderman

Rebecca & Nicolas Olshansky in memory of Reuben Starkman

Rebecca & Nicolas Olshansky in memory of Harold Levy

Rebecca & Nicolas Olshansky in memory of Robert Kinstlinger, MD

Rebecca & Nicolas Olshansky in memory of Kaila Margolis

Rebecca & Nicolas Olshansky in honor of Cathy Weiss' birthday

Rebecca & Nicolas Olshansky in memory of Alvin Magid

Rebecca & Nicolas Olshansky in memory of Elaine Bayer

Rebecca & Nicolas Olshansky in memory of Herbert Newman

Rebecca & Nicolas Olshansky in memory of Isidor Juda

Rebecca & Nicolas Olshansky in memory of Harry Frasier

Helen Polewoj in honor of Gerry Marder's birthday

Tracy Rabin in honor of Steve Rabin for Valentine's Day

Rebecca Radin in memory of Florence and Harry Radin

Steven & Ilene Radin in memory of Florence Radin

Ruth Ratner in memory of John Farina

Johanna Rayman in memory of Reuben Starkman

Abraham & Sherri Reich in memory of Esther Reich

Jennifer Reif in memory of Isidor Juda

Bonnie & Alan Rice in honor of Dorothy Lipton's birthday

Sylvia Rifkin in honor of Lillian Liberman's new great grandchild

Sylvia Rifkin in memory of Isidor Juda

Sylvia Rifkin in memory of Gladys Goldbaum

Yolanda Robinson in honor of Brenda Robinson's birthday

Harry Rosenberg & Helen Sackler-Rosenberg in memory of Helene Rosenberg

Judith Rosof in honor of Janet Grossgold for Valentine's Day

Ellen Rubenfeld in memory of Edythe Tanenbaum

Ellen & Daniel Salmon in memory of Helen Blume

Ann Salomon in honor of John and Dorothy Salomon

Janet & William Sayles in memory of Joan McGrath

Elizabeth Scheibel in memory of John O'Connell

Lauren & Paul Sepowitz in memory of Isidor Juda

Mariah & Bruce Seymour in honor of Dianne Forrest's birthday

Elinor Shanbrom in honor of Joe Blumberg's birthday

Elinor Shanbrom in memory of Lillian Katzman

Carol & Lawrence Shapiro in memory of Lillian Katzman

Lois & David Sherwin in memory of Lillian Katzman

Glenn & Kim Shiffrin in honor of Linda Shiffrin's birthday

Patricia Shure in memory of Lillian Katzman

Alan Siegal in memory of Evelyne Siegal



President/CEO Gustave (Gus) Keach-Longo with Resident Dale Newman

Anita Silver in honor of
Lillian Liberman's birthday

Nancy & Brett Silvers in
memory of Arlene Horton
Weiner

Riva Smolen in memory of
Vera Godfrey

Riva Smolen in memory of
Ruth Brown

Arlene Beck & Ari
Soobitsky in memory of
Isidor Juda

David Sotnick in memory
of Lillian Katzman

Louis Stein in memory of
Isidor Juda

Harry & Judith Strauss in
memory of Barry Zaret, MD

Joyce Sutherland in
honor of Lawrence
Rubin's birthday

Cheryl & Alan Talpalar in
memory of Lillian Katzman

Janet Tettelbach in
memory of Isidor Juda

The Towers Resident's
Association in honor of
Barry* and Hyla Vine

Lillian & Nathan Topf in
memory of Bina Fenig

Heidi Vernick in memory of
Priscilla Garber

The Vine Family in memory
of Charles Ludwig

The Vine Family in memory
of Herbert Newman

Carole Weinstein in honor
of Sandy Naclerio

Carole Weinstein in honor
of Sylvia Rifkin

Carole Weinstein in
memory of Isidor Juda

Carole Weinstein in honor
of Sandy Naclerio

Jesse & Elizabeth Wescott
in honor of Stacey Berg

Jesse & Elizabeth Wescott
in honor of Ryan Linsley

Jesse & Elizabeth
Wescott in honor of
Dottie Johnston

Jesse & Elizabeth
Wescott in honor of Rafael
Gonzalez

Jesse & Elizabeth Wescott
in honor of Tim and
Heather Smith

Marion & Larry Winkler
in honor of Norman
Feitelson's birthday

Marion & Larry Winkler in
memory of Sally Kramer

Richard Wurtzel in memory
of Virginia Baboian

Richard Wurtzel in
memory of Limturi
"Happiness" Kovaci

Richard Wurtzel in
memory of Leslie Epstein
Pearson's brother, Jonny

Richard Wurtzel in
memory of Ed Shiff

Richard Wurtzel in memory
of Esteruth Rumpler

Karen & Ira Zeid in
memory of Lillian Katzman

Doris & Edward Zelinsky in
memory of Kaila Margolis

Doris & Edward Zelinsky in
memory of Howard Gralla

Doris & Edward Zelinsky in
memory of Isidor Juda

Doris & Edward Zelinsky in
memory of Alberta Cohen

Rose Zolnik in honor of
Steve Rabin for
Valentine's Day

Barbara Zuk in memory of
James Bayne

**Of blessed memory*



THE TOWERS

AT TOWER LANE

18 Tower Lane • New Haven, CT 06519
www.towerlane.org