



12/8/2023

Work in all the Stage 1 areas has most definitely been picking up steam and we hope you enjoy the progress pictures and updates below. Some days we couldn't take enough pictures to keep up with the multiple teams all working onsite now.

Exterior Dining and Entrance Site Work

The new Solarium is almost ready to be closed in with glazing and glass; framing has started for the two sided fireplace and the structural steel is being closed in. This allows the roofing contractor to begin their process.

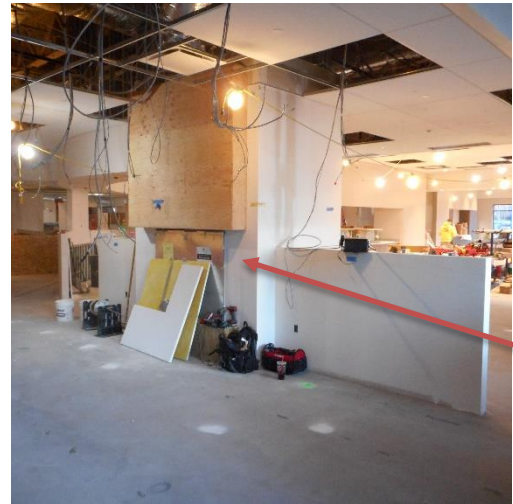
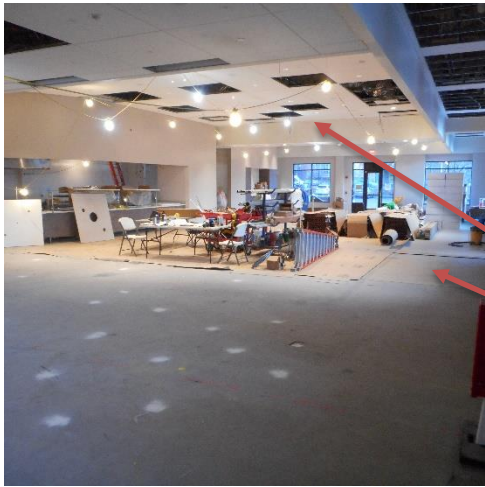
With the tall ceilings and large glass panels this space is going to serve this community for years and years. Sidewalks are being poured and this gives us a glimpse at how the new entry circle for Tower One will function.





Dining Space/Display Kitchen

Multiple teams have been working in our dining spaces and the Main Dining Room is really starting to take shape. The arrows show lighting installed, flooring installed (but protected with a covering) and framing up for the fireplace in the Lounge.



In the Café, you can see the equipment being put together; we are awaiting the gorgeous wall tile to complete the display kitchen. Equipment is being installed and you can get a glimpse of that amazing pizza oven in this sneak peek.





Upcoming Work

Lots to talk about here:

- In the picture below you can see several neat piles of “stuff” that I’ll highlight with colored arrows; there’s a lot going on here.
 - Wallpaper for Dining Room, Café and new Tower One Entrance
 - Ceiling pads
 - Wood slats for a decorative ceiling
 - Hidden is the installation packet for the Dining Room fireplace

Also pictured below is a very exciting picture; we’ve brought the water, power and data lines to the Community Garden and now it’s time to start digging to pour the walking paths and pads for garden beds. Hurrah!

Jesse Wescott

Vice President – The Towers at Tower Lane

