



1/22/2025

Welcome to 2025. Here are some highlights from the spaces on the Tower East side of our building.

## James M. Shure Family Sanctuary

This is going to be a truly beautiful space. The pictures don't do it justice.

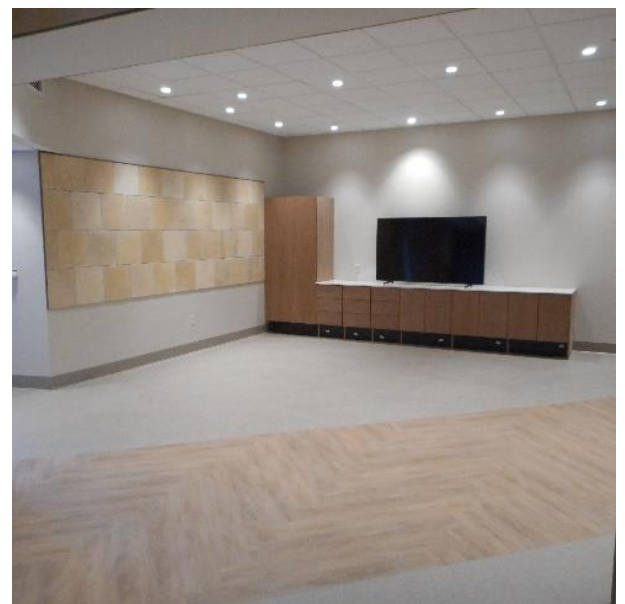
Here you can see the Jerusalem stone, millwork and flooring are completed. The last touches are underway.

They include accent lighting and the installation of the Ark, made specially for us at kibbutz Lavi in Israel.

We are also finalizing the eternal flame selection.

We are very excited to start using this space.

Once the new stunning Ark doors are finished and installed we can return to holding services in this special space.





The art glass wall and ceiling will create a wonderful entrance to the new sanctuary.

It is very close to completion and the fabricators and will be installed with backlighting.

To say it will be eye catching will be an understatement.

## Tower East Entrance & Living Room

These spaces are proceeding nicely. Once inspections are complete with the City of New Haven, the spaces can be finished and we can push to officially re-open the Tower East entrance.



Take a look at the massive steel beam that was installed to provide a new living room space where the old Business Office used to be located.

This space will be a wonderful spot to visit with your neighbors and look out the large window that was inaccessible in the past.

The walkways in the area have been sheet rocked and after the inspection can be wrapped in wallcovering.

The new reception desk is installed and being wired for the door openers, cameras and all the security measures just like the desk on the Tower One side of our building.



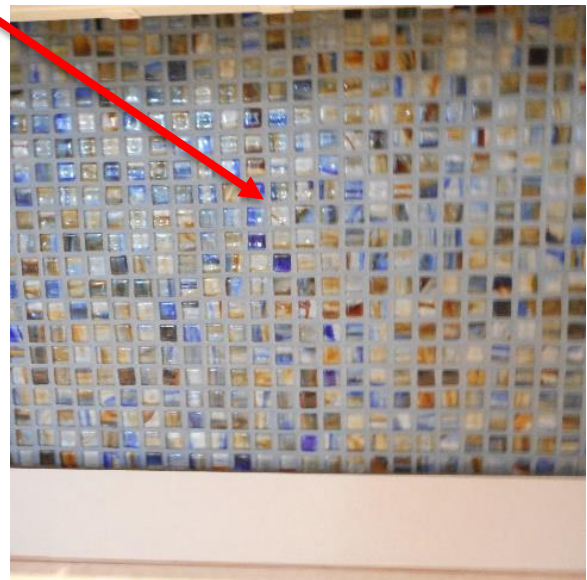
## Albert Zax Creativity Studio & Janie Holmes Library Spaces

These two spaces will be greatly used by our residents and we're working with Sarah & Dean (our programming and volunteering dynamic duo) to start programs in these spaces for the March calendar.

Much like the Tower East entrance area, we need the inspectors to approve the spaces so that we can finish the final touches and prepare for furniture to arrive in a few weeks.



Here is a close up of the mosaic tile in the creativity studio. It really pops!





Leading up to the Albert Zax Creativity Studio (formerly where Sarah and Dean had their office) will be a new seating area as part of the new Janie Holmes Library.



Be on the lookout for an invitation to come to a meeting dedicated to volunteerism for residents for the library. We want to hear what you want from your library.

Imagine sitting here and enjoying views of the courtyard while you do a puzzle or read a great book; all while waiting for an art program to start inside the studio!

## What's Coming Next?

As we get closer and closer to completing this part of our renovation, the teams will continue their progress, with a focus on:

- Building an exterior, non-temperature controlled, ramp and walkway between the Tower East living room and Café. This will be our new pathway between the two sides of our community. Please dress appropriately with jackets, hats and mittens.
- Ceiling tiles and decorative lighting within the next 2 weeks
- Wallcoverings and millwork (woodwork/wood walls) within the next 3 weeks
- Continued focus on opening the Tower East entrance as quickly as possible

We are excited and eager to share the spaces with you within the next couple weeks.

Fondly,

Gus and Jesse