



THE TOWERS  
AT TOWER LANE

# CONSTRUCTION UPDATES

5/29/2024

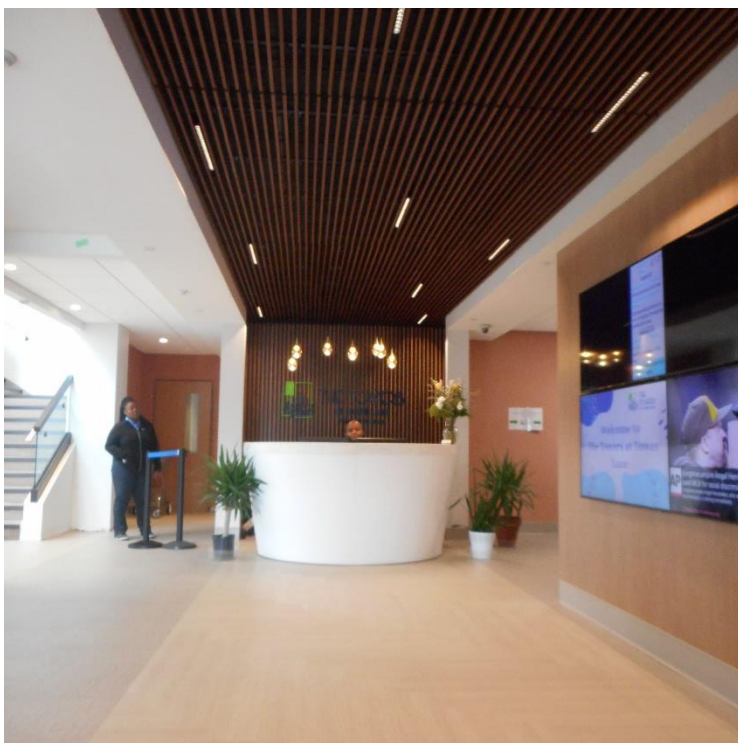
It has been a full week since we opened our new Tower One Entrance and began fully serving residents in our renovated dining spaces. It has been truly amazing watching residents, families, and our friends find their ways through the beautiful new rooms and marvel over the changes!

Please forgive the length of this update; we are including a large foot traffic flow map & some pictures of finished spaces, along with an update on the work in Tower East.

## Stage 1: Finishing Touches & Foot Traffic Flow

Over the next few weeks some small finishing touches will be added to the new Solarium and Front Desk areas, such as wallpaper, window frosting, and decorative lighting, but for the most part, these beautiful new spaces are ready to be used.

The Hospitality Desk is back up and running so we encourage everyone to stop by and say hello to our resident ambassadors. All our foot traffic to get to the Lobby and Tower



One Mail Room will flow past the desk, providing everyone an excellent opportunity for resident interactions.

The new Tower One Desk, complete with sign in iPad and TVs showing our in-house cable channels is up and (almost) running as well. We'll be working through some logistics and IT infrastructure work over the next two weeks. What a way to welcome everyone home.



THE TOWERS  
AT TOWER LANE

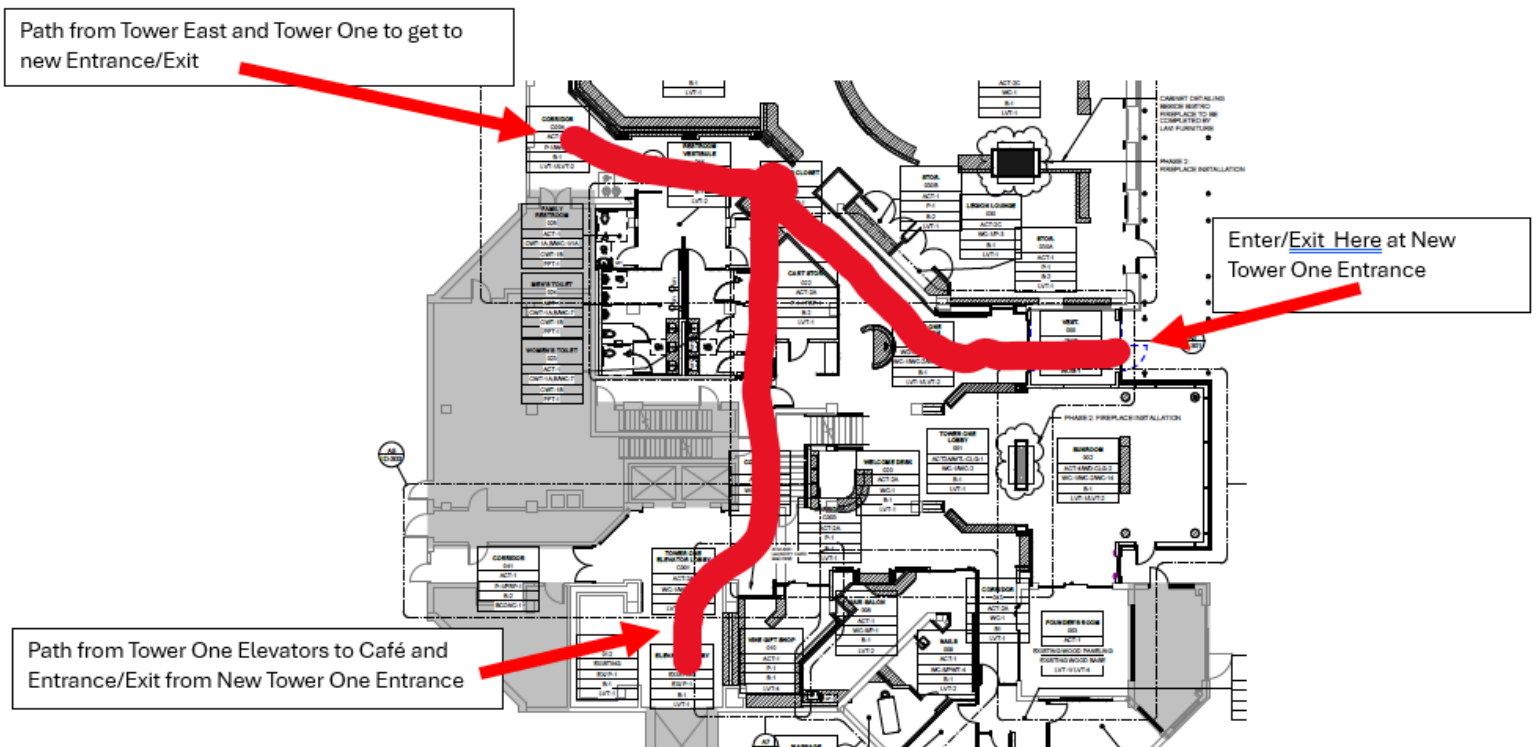
# CONSTRUCTION UPDATES

Immediately to the left of the desk is the Hospitality Desk and if you pivot further left you enter the David and Sharon Bender Family Foundation Solarium, with its tall windows. The natural light flowing in really highlights the two-sided fireplace. Very much looking forward to furnishing this space and seeing residents enjoy further!





With all these newly opened spaces, we did make a change to the foot traffic pattern entering the building to the elevators; here is a crudely drawn foot traffic map of how we'll make the journey.



Simply follow the red lined path to get in and out of the building. We'll update this map once the work in Tower East is finished and our new Tower East Entrance is built.

In the coming days we'll provide a user friendly ground floor layout map so we can create a "You Are Here" map that our amazing Hospitality Desk can share with visitors and new residents.

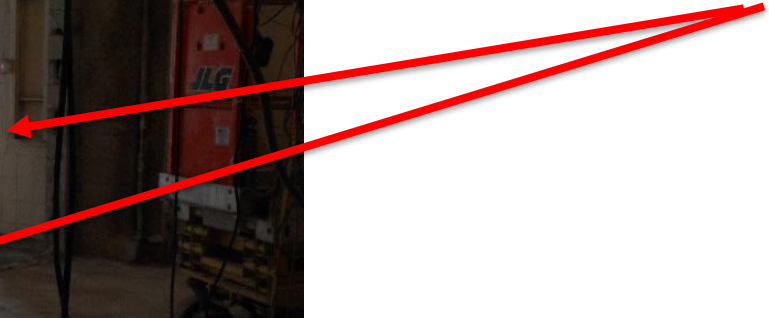


## Tower East Creativity Studio & Entrance

Stage 2 demolition work is in full swing and the sounds of jack hammering is in the air! Progress in Tower East is moving along well. Ceilings, flooring and walls have been knocked down to create large, inviting spaces to welcome us to Tower East. Look at some of the work:



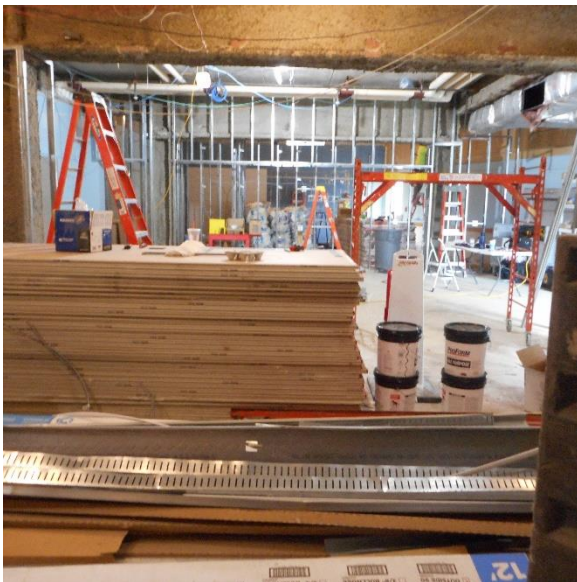
Can you see the walls of the vestibule taken down here?





## Tower East Sanctuary

Our old Tower East Meeting Room is being converted into the James M. Shure Family Sanctuary and work is in full swing.



Compare this photo with a rendering of what the finished space will resemble and the incredible transformation we have to look forward to!



## What's Coming Next

In the upcoming weeks teams will continue the demolition (sorry for the noise) and roughing in for framing walls, HVAC ducts and electrical.

With that said, please do some wayfinding and enjoy the beauty of the garden and the path, the entrance and come down for some pizza or something else that tickles your fancy in our dining spaces!

Jesse Wescott  
Vice President – The Towers at Tower Lane