



7/16/2024

Welcome to Summer! To catch everyone up on construction to date, we are sharing a longer than usual memo with lots of pictures and drawings. Lounge in your favorite new chair or new garden park bench and get ready for some progress pictures! We've been very busy finishing up the final touches of Stage 1, starting Stage 2 and working on some grant funded projects on the exterior of our campus, such as the community garden and the new main entrance to our campus. We have so much to share and so much to look forward to.

Stage 1: Finishing Touches & Foot Traffic Flow

We were very excited to welcome residents and families into our new Tower One entrance a few short weeks ago. We're now fully open in the Dining Room and Café and it has been so wonderful to see that space full of smooth jazz and laughter and the buzz of conversation.



The finishing touches of some minor millwork, balancing the HVAC and finishing the wallpaper are highlights of some current work.

The custom metal handrail for the stairs up to the administrative offices and corner guards are almost complete.

Here you can see the Hospitality Desk which is already staffed by our resident volunteers who do an amazing job! Behind the desk will be a display case where we can showcase the awards our team, volunteers and community have humbly

accepted in the last 6 years. The wooden rails will be replaced with architectural metal rails and there will be wooden toppers to complement the millwork below.



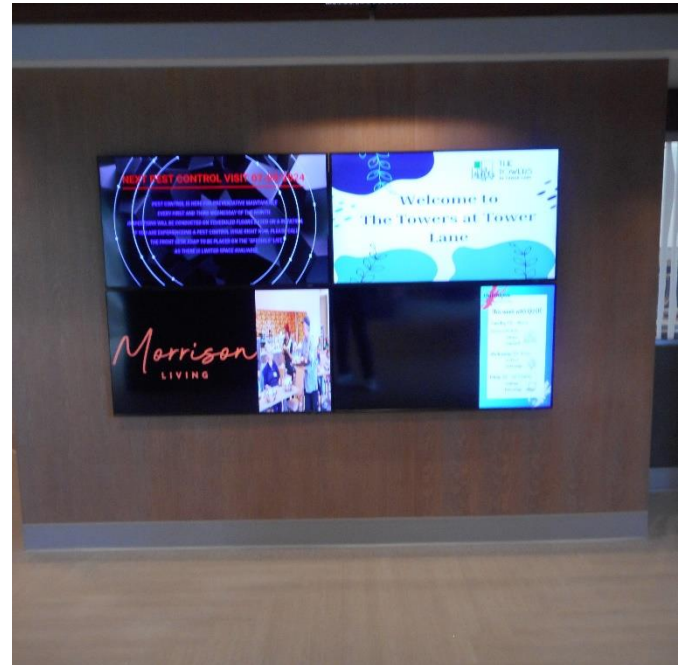
THE TOWERS
AT TOWER LANE

CONSTRUCTION UPDATES

Also in that Tower One entrance space, you can see our quad TV design that broadcasts our 4 in-house channels from Towers TV.

In the upcoming months, as spaces are finished and our culinary and programming teams have the opportunity to get back into their groove, we'll be creating lots of content for these channels. Stay tuned!

But for now, they are a nice welcome and nod to our infusion of technology as you enter our community.



We're also now fully up and running with our SINE sign in system inside the vestibule and we're asking each and every person who enters our community (unless you are a resident or core Towers staff) to utilize this.

This system helps us know who is on campus in the event of an emergency and helps us also track visitors and engagement of our residents; giving our RSC team the ability to really customize their approach.

Don't be surprised in the upcoming weeks when the Front Desk Officer stops you and asks for your license; we're beginning to conduct spot checks on that aspect of the SINE system as well.



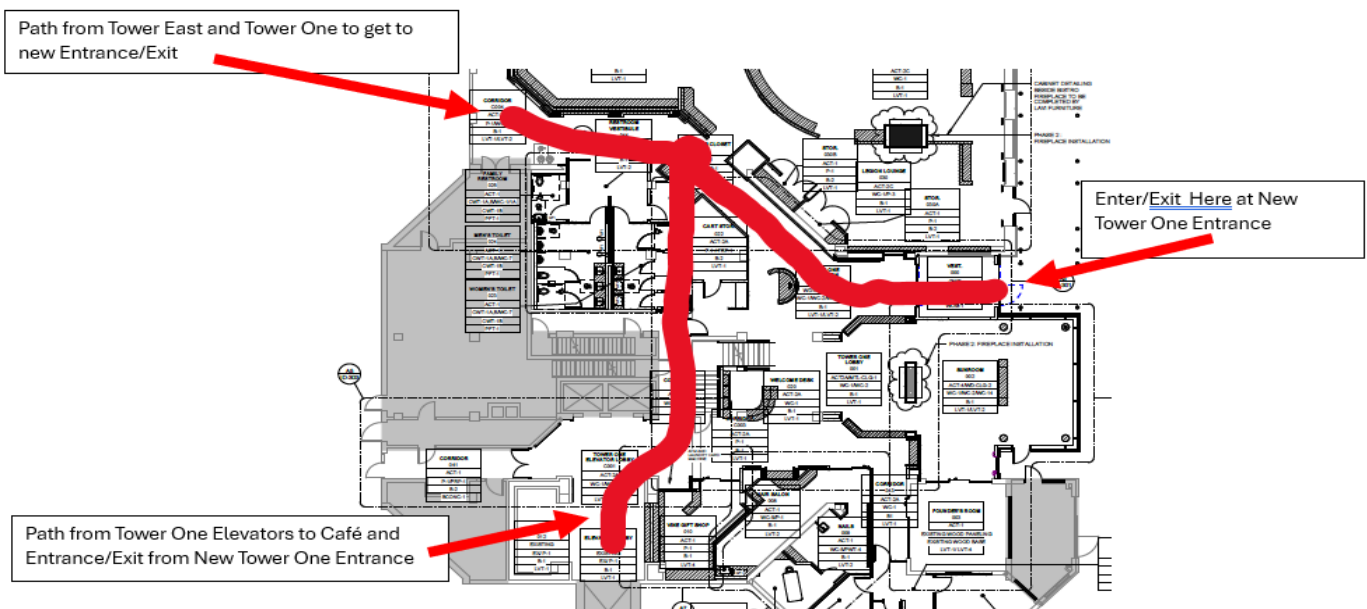
We also hope when the humidity isn't at its peak that you're enjoying the view and progress of the exterior projects from one of our shaded benches underneath our Exterior Dining Canopy.

In the upcoming weeks we'll be adding a few more metal trim pieces and doing some finishing work here to ready the space for tables and chairs. Dining outdoors will be something this writer is very excited about!



Foot Traffic Map Reminder

Just as a refresher, we are still using this modified foot traffic path to help our community move about the first floor.





Stage 2

Tower East Creativity Studio & Entrance

Tower East is getting lots of attention in Stage 2 and the areas are really starting to take form. Demolition is about 90% finished in Tower East so the banging and clanging should be somewhat behind us.



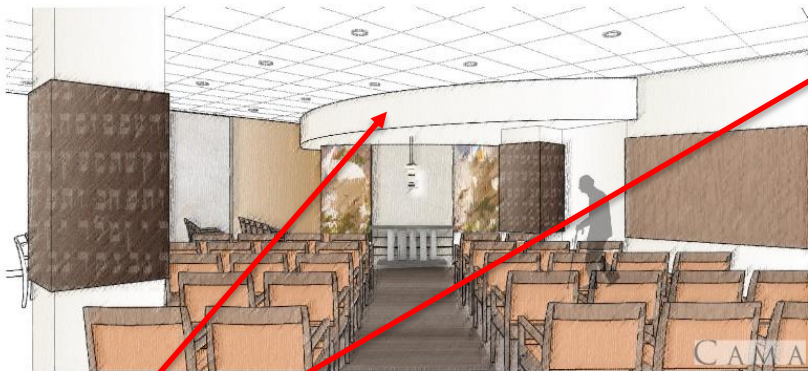
You can see the new vestibule taking shape here. Picture entering through this newly framed space and being welcomed by our Front Desk Team directly. They will be seated in front of you instead of the awkward 90 degree interactions of the past.

We'll share some pictures of how the Tower East desk will look once the framing and sheetrock are up. I've learned that it's hard to see depth and aspect when it's just the metal studs, but this space will be incredibly beautiful.

James M. Shure Family Sanctuary

Work in the Sanctuary/Multi-Purpose space has continued and we'd like to share another comparison picture to help us start to see what it will look like finished.

Compare this photo on the next page with a rendering of what the finished space will resemble and the incredible transformation we have to look forward to!



Here you can see the soffit being sheet rocked and where the Ark will be displayed. The Ark and other millwork pieces were crafted in Israel and are onsite and awaiting their opportunity to beautify this space.

What you'll never see in the finished spaces are the weeks and weeks of time that teams of electricians and low voltage wire specialists have spent moving, securing and modifying all the wiring that makes The Towers run.

Think of the biggest bowl of spaghetti you've ever seen and now multiply that times about 10,000 and that will give you an idea of what was hiding above our ceilings. This work, although not photo worthy or glamorous will help The Towers continue to have access to WiFi, cameras and all the vital life safety systems it needs.

Exterior Projects – Community Garden and New Campus Entrance and Driveway

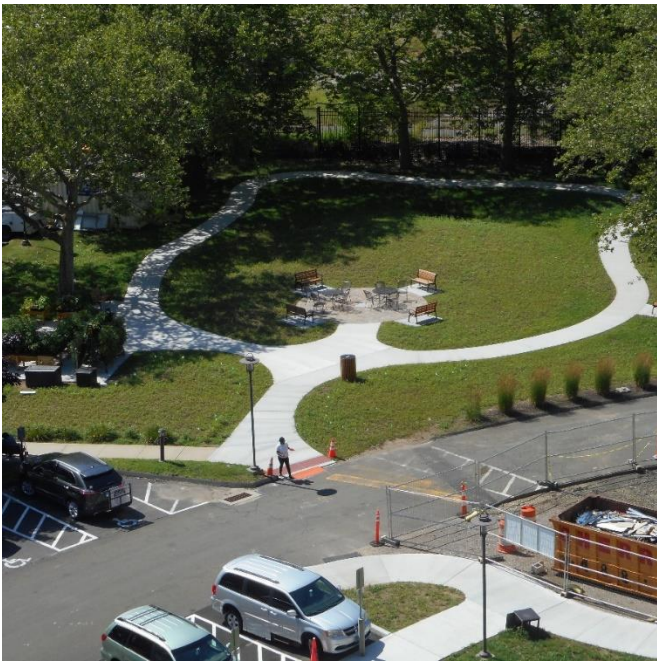
Outside of Tower One, there has been some major work done in a short period of time. We are pushing this extra hard with our construction partners so that we can open the



THE TOWERS
AT TOWER LANE

CONSTRUCTION UPDATES

short-term parking lot, main entrance and driveway back up as quickly as possible. Please know that we appreciate everyone's flexibility and patience as we did these much-needed enhancements. Read on for more!



Here is the latest aerial photograph of the Community Garden. The hydroseeding is starting to take, but we'll need to wait for cooler temperatures before we plant anything else. Fall seeding time will be upon us before you know it!

In the next week or so we'll mulch and add a small amount of river rock along with some wind sculptures.

The Community Garden Task Force has been hard at work planning plantings and additional amenities for our community. We're so grateful to each and every one of our dedicated expert volunteers.

We'd like to note that as part of that funding, we needed to produce a harvest of herbs and vegetables to donate to a local food pantry. Thanks to the efforts of our team and one amazing Staff member named Ryan, our produce garden has thrived beyond our expectations. We've been able to share bumper harvests and make several donations to Jewish Family Services of Greater New Haven Food Pantry. This is a wonderful new community partnership program.

Looking at our most current project, you can see in the pictures below that the new Main Entrance to our campus is going to feel very different in a few short weeks.



We moved the sidewalk away from the incoming traffic and will use garden beds for separation and beauty. You can see how the sidewalk comes around Tower One and puts our pedestrians further up the sidewalk and away from the traffic of campus.



To the left of the sidewalk will be some sea grasses and rock to match some of what we currently see on campus. To the left is a space we can use to do plantings in the fall as well.

If you are entering our campus using a motor vehicle, be prepared for our newly enhanced (and more secure) method of welcoming you.

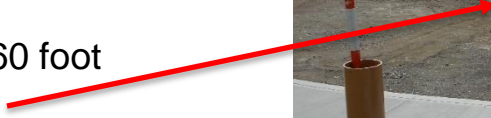
You'll pull further into our campus and be stopped by a swing arm gate, where you'll need to buzz the front desk and they'll use the equipped camera to confirm that you're someone we want to visit with.

We've beefed up the hardscape of the entrance with some concrete columns to help protect all this new technology.





Out in front of the new David and Sharon Bender Family Foundation Solarium and Tower One Entrance, you can start to see the driveway take shape.

Please note the foundation for our 60 foot illuminated flag pole in the picture. 

The driveway is also flanked by additional hardscape with rocks and lit bollards to help bring both beauty, light and security to this area of our campus.

Residents will be welcomed and guided by the lit bollards and this will be an amazing first impression of our community.

What's Coming Next

In the upcoming weeks teams will continue the progress in the areas shown above. The main priority is to finish and re-open our main entrance and get the flow of vehicle and foot traffic back to a normal pattern.

Inside, we're looking at 2 to 3 weeks more of sheet rock and mechanical system rough in. Then we can start to see the finishes come in and those will truly be great pictures!

As always, we are so appreciative of everyone reading these updates and continuing to walk this path of enhancement and improvement with our team. This community continually astounds us with its resilience and support. Have a wonderful July all and we'll be back in touch with another update soon.

Jesse Wescott
Vice President – The Towers at Tower Lane

