



8/27/2024

We hope you found our recent special projects memo helpful; we are full steam ahead on those projects and we are grateful that we have the opportunity to further improve more areas of our campus.

As promised in that memo, we're going to update everyone with pictures and progress from Stage 1 and take a much deeper dive into Stage 2. This stage has really been advancing nicely.

## **Stage 1: Finishing Touches**

It's been amazing to watch (and hear) the Dining Room and Café so full of life and to see the Resident Hospitality Desk staffed with volunteers helping our visitors and residents.

Very small touches, such as the permanent metal stair railings, wood caps on stairs, HVAC balancing, wallpaper, decorative lighting and measurements for artwork are all being done quietly, so as not to disturb the comings and going of these occupied spaces.

This week we'll see more millwork and metal paneling being put up near the David and Sharon Bender Family Foundation Solarium and plinth lights being installed. Our operations and culinary teams have also been undergoing training from some of the manufacturers on how to clean, replace and preserve the finishes on the new spaces.

## **Stage 2: Tower East Creativity Studio & Entrance**

The bulk of the work and the more transformative pictures center around this second stage, which is focused on the two wings of our community, working inward.

The Tower East entrance is nearing completion of roughing in of electric, plumbing, HVAC and finished drywall. Work is also underway to create the floor for the new



Tower East vestibule, so we have consistency in how our community enters our buildings.

As you can see in the pictures here, concrete work is being done on the slab flooring and you can start to get a sense of how you'll be greeted by our Front Desk Team as you enter Tower East.



There will be two sets of secured sliding doors and our SINE sign in system present once the framing is completed.

Once through the doors, you'll be greeted with an identical desk and slatted wooden plank ceiling as the one you see currently in Tower One.

This will function as the command center for Tower East and be staffed by our Front Desk Team; equipped with gate controls, camera screens and all the safety/security/new fire alarm features needed. You can see the stub up pipes from the floor; that's where the center of the desk will be located.

We're also in the final engineering process of designing the steel work needed to open up the area where the guard used to sit to be a large lounge space so residents can watch for their pickups, await family members and congregate.

Another truly amazing feature that is well underway is the artwork glass wall/ceiling that will welcome our community into the James M. Shure Family Sanctuary space.





Take a look at the side by side pictures here; think of it as a before and potential after. But the rendering won't do justice to how beautiful this will be when it's backlit and glowing.



## James M. Shure Family Sanctuary



In the July update we showed the rough framing for the Ark where the Torah will be stored.

Things have progressed nicely and the space is now prepped for wallcovering and the installation of the Ark Doors.

We are beyond excited for the finishes to be installed so we can move forward with the installation of our beautiful bima, Torah holder and millwork accents that were hand crafted in Israel. These are going to be such an elegance to the space.



While all this is happening, the rest of the space is being drywalled and being made ready for wall coverings.

The millwork cabinets that will house supplies and display the TV are being built for installation in early October. You can also see the rough in electrical for the lighting and the acoustic ceiling tiles.

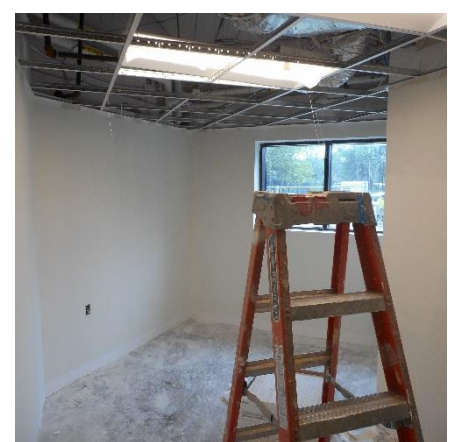
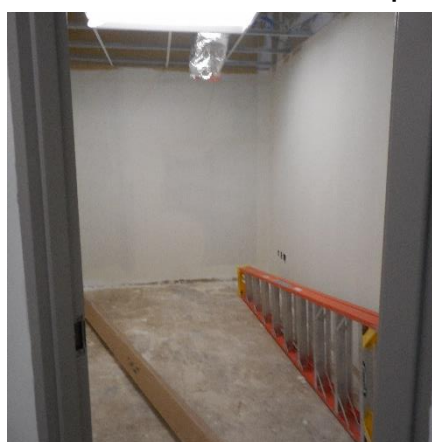


## **Tower One Offices, Founders Conference Room, Siegal Family Salon & Vine Family Gift Shop**

In Tower One, work has progressed very nicely and all of these spaces are being prepared for new doors, wall coverings, lighting and acoustic ceiling tile grids. Flooring is ordered and scheduled for early September.

These pictures don't show the angles of the hallway, but this area will be well used and will feel like the "main street" of our community, with the salon, gift shop, ATM, laundry card machine and soft seating all allowing residents to have access to amenities.

Here are a few pictures of some of the semi-finished spaces.





THE TOWERS  
AT TOWER LANE

# CONSTRUCTION UPDATES

## What's Coming Next

In the upcoming weeks teams will continue to focus on getting all the spaces ready for finishes; flooring, lighting, wall covering, etc.

We've ordered the Tower East Desk, glass panels and furniture for some of the common spaces to help manage those lead times.

We'll be in touch soon with updated pictures of these spaces and progress notes on how the special projects are going as well.

This past week included saw cutting, jack hammering and lots of demolition in and around both buildings, so again, we are so thankful for the patience and flexibility of our community. The noise will eventually stop as wallpaper tends to be a fairly quiet process, so please know that this is just temporary.

Jesse Wescott

Vice President – The Towers at Tower Lane

Just had to post one last Community Garden picture; that river rock really frames the entry well and looking at this as a whole, it truly is an amazing project and a fabulous blank palette for trees and plantings.

